

CANADA'S

styleathome

What's
HOT?
PAINT
COLOURS
WE
LOVE

Ring in
the
**NEW
YEAR**
with a
**NEW
LOOK**

AN
INSIDER'S
VIEW
Featuring
Sarah
Richardson

TRENDS
2021 REBOOT
REFRESH
RENEW

BRILLIANT BASEMENT RENOS
bring upstairs style downstairs

STRUCTUBE

**Low
Prices**
—
AMAZING STYLES

\$399
CARME
queen-size bed

\$139 SHANY
bedside table

SHOP IN-STORE AND ONLINE AT [STRUCTUBE.COM](https://www.structube.com)

With over 75 stores across the country, Structube is the shopping destination to discover a wide selection of modern and trendy furniture offered at exceptionally low prices.

 **FREE DELIVERY**

Enjoy free delivery with orders over \$299.*
Visit [structube.com](https://www.structube.com) for more details.

*Certain conditions may apply.

styleathome

JANUARY/FEBRUARY 2021

56



HOMES

56 HOLLYWOOD NORTH

Glamour and the golden age of film inspired Jennifer Backstein's design of a home that blends opulent style with family-friendly finishes.

70 A FINE VINTAGE

In her young family's renovated Grimsby, Ont., home, designer Lindsay Mens Craig proves that elegant traditional spaces can also be fresh, cozy and inviting.

82 EYE ON THE PRIZE

Seeing the possibilities helps a Montreal-area realtor revamp her mid-century ranch for modern family life.

COLUMNS

7 STYLE NEWS

The best home products, the hottest trends and the most inspiring ideas.

14 DESSERT OF THE MONTH

Delicate citrus, almond and floral notes in our Olive Oil and Almond Cake will delight the senses.

18 HIGH OR LOW

Two luxe bedrooms: one had a lavish budget and the other, lean. Can you tell which is which?

22 MARKET WATCH

Contributing Editor Karl Lohnes forecasts five trends for 2021.

82



14

A slice of Olive Oil and Almond Cake will make your afternoon tea break an elegant affair.



52



28

92

Sweet and salty pair up for perfection in this tempting tahini-topped fudge.



DECORATING

12 NORTHERN LIGHTS

Come in from the cold to a table that blends warm wintry whites and light-toned natural elements with a handcrafted feel.

24 COMFORT ZONES

Designer Stephanie Charest transforms an unfinished Calgary basement into a family retreat with designated areas for fun and relaxation.

28 FIRST-PLACE FINISH

Designer Tiffany Piotrowski takes a basement from unfinished to unbelievable.

35 1 BOOKCASE 3 WAYS

No matter what look you love, shine a spotlight on it by styling your shelves like a pro.

38 MODERN LOVE

An artful mix of colour, texture and unique furnishings gives this loft a look that's highly personal and right on trend.

44 TALKING TRENDS

We speak to Canadian design phenom Sarah Richardson about 2021 trends.

46 WHAT'S HOT IN 2021?

Our experts highlight 2021's top trends, from art to pattern and textures to tech. Which will you embrace to make your home an inspiring haven?

52 COLOURS OF THE YEAR

There's no easier or faster way to refresh a room than with a new coat of paint. The biggest trend in 2021 is a shift to soothing warm neutrals – just what we need!

FOOD

92 THE GOOD FATS

Good food, good fat, great taste. These recipes combine healthy fats and delicious ingredients to keep your tastebuds and tummy happy.

REGULARS

FROM OUR EDITOR 5

WORKBOOK 96

SPOTLIGHT 98



ON THE COVER

Old Hollywood glamour and durable finishes make this family home chic.

COVER PHOTOGRAPHY

JBI, Jennifer Backstein Interiors



Welcome to our TRENDS issue

Our first issue of the year is always about looking forward and, if you're like me, you're ready to do just that and leave 2020 behind.

To me, decorating trends are inherently optimistic. They can get a bad rap by those who call them passing fads, but I consider trends as significant design directions that reflect how we want to live and what we want to see. Trends are aspirational, and inextricably linked to wider cultural happenings.

Of course, the biggest influencer of trends and every aspect of our lives lately has been the pandemic. For many of us (not all of us – our deepest thanks go to essential workers everywhere), that has meant working at home for the first time.

Perhaps that's why we are seeing a huge trend toward turning our homes into sanctuaries. With work sometimes steps from our most private spaces, it's more crucial than ever to create interiors that promote emotional well-being, and relaxation for body and mind.

In this issue, we show you how this trend is changing how we live. Shared family spaces are increasingly important, like the two gorgeous basements we feature (page 24 and 28). And there's a more harmonious integration of home offices, so when the workday is over, our rooms don't look corporate - take a look at all three of our feature homes this issue and you'll see what I mean. Colour trends soothe, art is honoured, private space is carved out for alone time – this is all good news. I hope you enjoy our look at these new directions, and I sincerely wish you happiness and health in 2021.

✉ veronique.leblanc@tva.ca **f** facebook.com/styleathome
t [@styleathome](https://twitter.com/styleathome) **i** instagram.com/styleathome

styleathome

at your service

As a *Style at Home* subscriber, you can expect the best in subscription service. If you have any questions about your subscription, please get in touch with us at the website, phone number or address listed below. In order to help us locate your file, please provide your current mailing label or the information on it.

SUBSCRIPTION EXPIRY To find out when your current subscription expires, check the mailing label. The labels are printed several weeks before the issue is mailed, so please give us six to eight weeks advance notice for renewals and changes of address in order to avoid missing an issue.

BILLING & RENEWAL NOTICES Invoice and renewal notices are printed one week before they're mailed to you. With delivery time, it's possible that your payment or renewal order will cross in the mail with our invoice or renewal notice. If you receive yet another invoice or notice, please contact us immediately.

WRAPPER/PERFUME STRIP

We occasionally mail your issue in a protective wrapper and/or insert a perfume strip in the magazine. If you'd rather receive the magazine without a wrapper or a strip, please let us know.

PRIVACY POLICY On occasion, we make our subscriber list available to carefully screened organizations whose products or services might be of interest to you. If you prefer to have your name and postal address removed from this list, please contact us. For the complete privacy policy, please view Privacy Policy at styleathome.com.

MAIL STYLE AT HOME, P.O. Box 814,
Markham Station, Markham, ON L3P 7Z6
CALL 1-800-387-7244
Complete subscriber services are available
online at styleathome.com.

styleathome

VOLUME 24 ISSUE 01

Vice-President, TVA Publications Lyne Robitaille
Chief Editor, Monthly Magazines Martine Aubin
Content Director Véronique Leblanc
Art Director Isabelle Dubuc
Features Editor Kathleen Dore
Copy Editor Katie Moore
Contributing Editor Karl Lohnes

ONE EASY WAY TO REACH US: FIRSTNAME.LASTNAME@TVA.CA

PRINTING

Printed at Transcontinental RBW Graphics, a division of Transcontinental Printing 2005 G.P., 2049 20th St. E., Owen Sound, ON N4K 5R2.
All reproduction requests must be made to COPIBEC (paper reproductions at 800-717-2022) ISSN: 1915-8998

DISTRIBUTION

Distributed by Comag

SUBSCRIPTIONS: 1-800-387-7244, STYLEATHOME.COM

STYLE AT HOME, Sub. Dept., P.O. Box 814, Markham Station, Markham, ON L3P 7Z6. Send address changes to the post office box address above, including the mailing label from your latest issue. Allow eight weeks for changes.

SUBSCRIPTION PRICES

Canadian subscriptions: **1 year = \$34.95** (plus taxes)
U.S. subscriptions: **1 year = \$90.00** (payable in advance)
International subscriptions: **1 year = \$180.00** (payable in advance)
Digital editions are available on Molto, Zinio, PressReader and Ebsco.
We occasionally use our subscriber list for marketing purposes, or share it with carefully selected companies whose products may be of interest to you. If you do not want your name to appear on this list, please notify us in writing.
Canadian Postmaster: Return undeliverable Canadian addresses to Style at Home, 123 Front Street West #909, Toronto, ON, M5J 2M2. Publications Mail Agreement 41557548, PAP Registration 08282. Postage paid at Gateway in Mississauga, ON. U.S. Postmaster: Send address changes to Style at Home, P.O. Box 766, Buffalo, NY 14240-0766. Periodicals postage paid at Buffalo, NY USPS731-350

OUR PRIVACY POLICY

The reproduction of written material, illustrations or photographs from this magazine is prohibited. Although all possible precautions have been taken to ensure that the information contained in *Style at Home* is accurate, it is understood that the magazine cannot be held responsible for errors or omissions that may occur in relation to the use or presentation of this information. The articles in this magazine are the exclusive responsibility of their authors.

Style at Home is published 9 times a year (except for occasional combined, expanded or premium issues) by TVA Publications Inc., 123 Front Street West #909, Toronto, ON M5J 2M2; 416-733-7600; groupetva.ca.

OPERATION & PRODUCTION

Director of Operation and Production, Magazines and Newspapers Johanne Perron
Production Coordinator Martine Lalonde

MARKETING, COMMUNICATIONS & EVENTS

Senior Marketing and Diffusion Director, Magazines and Newspapers Martine Aubin
Assistant Marketing Director, Magazines and Newspapers Marie-Josée Smith
Director, Newsstand Sales Michel Nivischuik
Director, Subscriptions and Circulation Evelyne Labonté

ADVERTISING SALES, TORONTO

416-227-8248 (patricia.mixemong@quebecormedia.com)
General Sales Manager Patricia Heckmann
Senior Director, Media Solutions Jérôme Leys
Sales Experts, Magazines Cathy Ellis, Andrea McBride, Vanessa Watson

ADVERTISING SALES, MONTREAL

514-598-2880 (ventespublicitaires@tva.ca)
Principal Vice-President, Sales Patrick Jutras
General Manager, Media Solutions Marie-Josée Fournier
Senior Director, Magazines & Newspapers Kimberley Rouse
Senior Advisor, Magazines & Newspapers Annie Bergeron
Senior Directors Karl Berthomé, Geneviève Brodeur
Sales Experts, Magazines Annie Bergeron, Vickie Bouthillier
Coordinators Rosina De Rose, Andréanne Lamoureux, Maria Perrotti

QUEBEC CITY AND REST OF QUEBEC

418-688-9330 ext. 7500
General Sales Manager Nathalie Langevin

ADVERTISING SALES, USA

Francis Gauthier 416-227-8301

CONTENT MARKETING & CREATIVE MEDIA SOLUTIONS

Media and Content Strategist Jeremie Marcoux
Project Management and Production Inga Tangreda

SENIOR MANAGEMENT, TVA GROUP INC.

President and CEO of TVA Group Inc. France Lauzière
Senior Vice-President and Chief Operating Officer Martin Picard
President of Human Resources Jean-François Reid
Vice-President of Communications Véronique Mercier
Vice-President of Finances Anick Dubois



Funded by the Government of Canada



For any comments, please email letters@styleathome.com
©2020 TVA Publications Inc. All rights reserved.



THINK RECYCLING!

style news

PAINT PALETTE OF THE MONTH



Beauti-Tone **BLUE PERIOD**
C14-1-0690-3, Home Hardware,
homehardware.ca.



TEAL OCEAN 2049-30, Benjamin
Moore, benjaminmoore.com.



JADITE SW6459, Sherwin-Williams,
sherwin-williams.ca.



Beauti-Tone **CAVERN SAND**
D6-1-0165-3, Home Hardware,
homehardware.ca.



WE'RE INSPIRED BY...

palettes that celebrate nature's power to calm our minds. Blue, green and brown comprise Mother Nature's everyday outfit and we're hardwired to breathe easier surrounded by them. Bring them inside to enjoy year-round.

—TREND ALERT—



1



2

KNOTTY CHARM

That definitive '70s craft - macramé - is enjoying a lengthy second life. Romantic and boho, it's showing up all through the house, from wall hangings to covered poufs, chandeliers to hanging plant holders. If you aren't crafty, have no fear, there are plenty of options for you in the shops.



3



4



5

1 Macrame-framed **MIRROR**, \$40, bouclair.com. 2 Bungalow Rose Dutra **HANGING CHAIR**, \$133, wayfair.ca. 3 Set of 4 handmade **COASTERS** in assorted colours, \$40, Bokrame, etsy.com. 4 Fringed-base **CHANDELIER**, \$238, renwil.com. 5 Niono **WALL DECOR**, \$159, mobilia.ca.



DARK MATTER

After a decade of white countertops, dark surfaces are surging in popularity. Caesarstone's new Empira Black is riding that wave. Organic-looking white veining on a rich, deep black background gives the luxe look of black marble. The dramatic colour will pair beautifully with pale or darker woods, and is a striking contrast to white cabinetry. It's a perfect way to bring moody depth to a kitchen or bathroom.

Empira Black, caesarstone.ca.

WILD THINGS

Bright, bold, beautiful and playful is the best way to describe the new Kruger pattern from Kravet. Inspired by Kruger National Park – a huge South African game reserve – it’s no surprise to see exotic animals frolicking on this fun textile...but this is no regular safari. You’ll spy spotted giraffes, unicornzebras and mystical blue palms. The turquoise colour is powerfully on trend.

Creatura in Turquoise, to the trade, Kravet.



SMARTY PANTS

Pants, blouses, sweaters...LG’s new “smart” washer and dryer is bringing high-tech cleaning to all your dirty laundry. New IA ThinQ technology let’s you stop and start the wash remotely and get alerts on your smart phone; the machines even determine the best cycle for fabrics, which can help prevent damage to your favourite sweater. The amount of detergent and softener you need, and the power of the washer jets are all automatically controlled. Laundry day just got more fun.

Washer and dryer, \$1,800 each, lg.com.



SHAPE SHIFTER

THE APTLY NAMED CHAMELEON SOFA BED HAS A CLEAN-LINE SILHOUETTE THAT CHANGES SHAPE TO SUIT YOUR NEEDS. MOVE THE BACKRESTS AROUND TO USE AS A CHAISE, GUEST BED OR REGULAR SOFA, OR REMOVE THE BACKRESTS AND USE AS A BENCH IN AN OPEN-CONCEPT SPACE. ADD A SECOND (OR THIRD) CHAMELEON AND YOU’VE GOT A SENSATIONAL SECTIONAL!

\$699, structube.com.

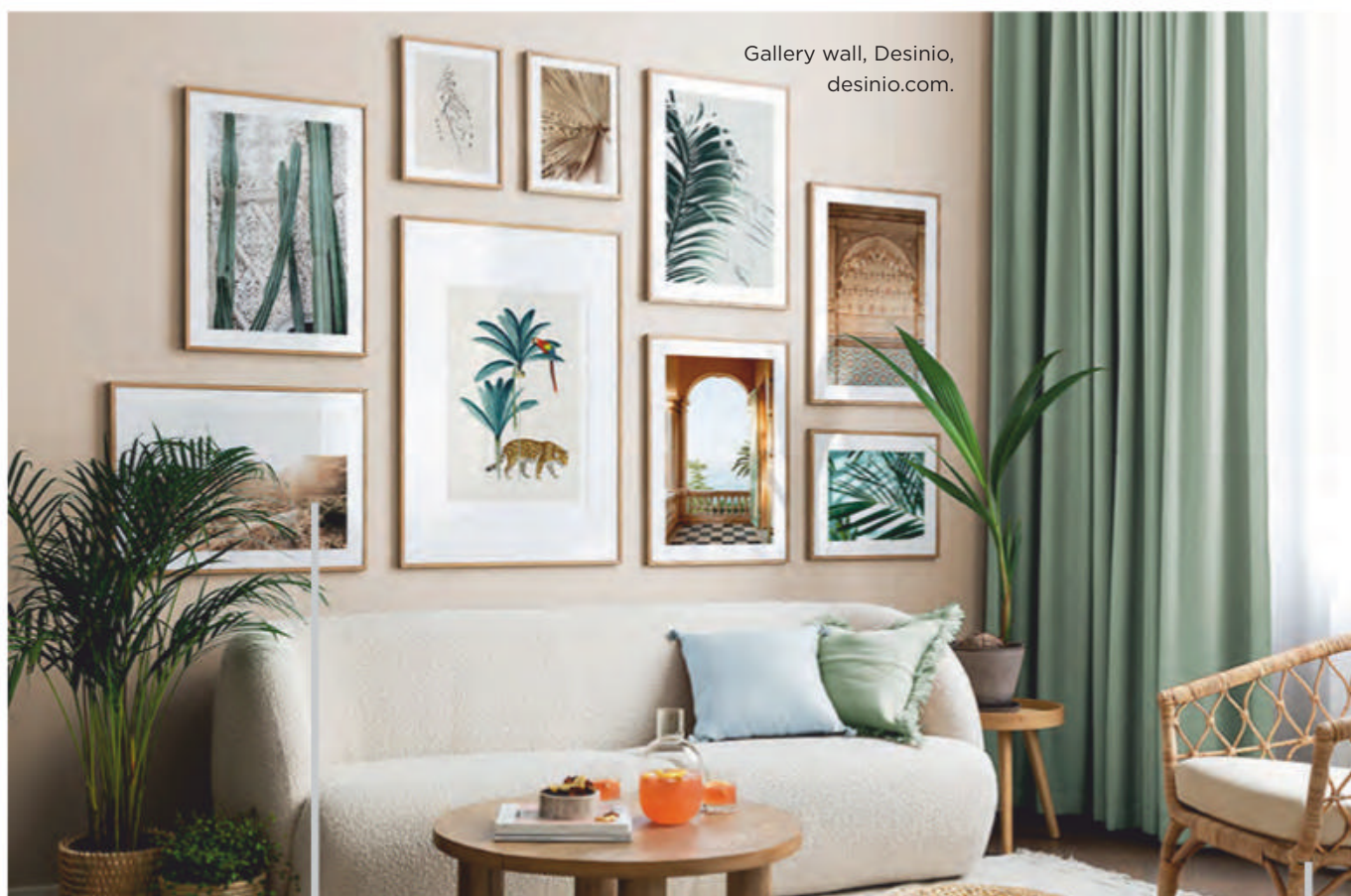




1

NESTING INSTINCTS

PRACTICAL, VERSATILE AND IMMINENTLY STYLISH, NESTING TABLES ARE THE ULTIMATE SMALL-SPACE SOLUTION.



Gallery wall, Desinio, desinio.com.



2



3

1 Set of two **TABLES** with gold-colour base and marble top. \$299, zarahome.com.

2 Set of three Xachary **TABLES** with iron base and mango-wood top. \$239, structube.com.

3 Set of two Stockholm **TABLES** in walnut veneer. \$299, ikea.ca.

Rx The Art Cure

The positive effects of making art on well-being is increasingly accepted and practiced in art therapy programs, but can just looking at art improve your mental health? Some studies have shown that viewing art can lower stress levels, enhance positive feelings and reduce negative ones. Those are three great reasons to create your own gallery at home, especially during these challenging times. “Art is the soul of any home,” says Emilia Ianeva, president of Berenson Fine Art in Toronto. She says that during the pandemic, her clients appreciate art even more. “I have noticed how much more pleasure a painting can give to a collector,” says Emilia. “We can travel to places through art and we can dream about them, and that process itself helps us move forward.” Emilia, a cancer survivor, says art has always been her salvation; she loves helping others discover its healing benefits. Her advice for building a collection during these challenging times makes sense. “Gustav Klimt said that art is a line around your thoughts,” says Emilia. “Try to find that imaginary line in you, respond to it, and let it touch your heart. That means art is speaking to you.”

LIGHT SHOW

GE's new full-colour LED strips bring the bright lights of Broadway home. Simply cut the strip to the desired length and sync them with your smart home assistant (Google or Alexa) to be voice activated and controlled remotely. Colour options are almost unlimited to create any mood for any room.

C by GE Full Color **LED** Strips and Extensions, one-metre strip, \$50, two-metre, \$115, lowes.ca.



**“Made you look.
And yes, I’m wearing Always Discreet.”**



Always Discreet Boutique Underwear. Fits close. Keeps you dry, too.

Northern Lights

Come in from the cold to a table that blends warm wintry whites with light-toned natural elements like linen, wood and ceramics with a handcrafted feel.

STYLING JULIE LAPOINTE | PHOTOGRAPHY TANGO



Warming Trend

WARM WOODS, MATERIALS AND TEXTURES ARE AN ANTIDOTE TO THE COLD. GET THE LOOK WITH FUZZY THROWS, LINENS WITH A HOMESPUN FEEL, A LIGHT-TONE WOOD TRAY, MUGS YOU WANT TO HOLD, AND A SOFT CARPET UNDERFOOT. COZY!

Opposite Wood dining **TABLE**, \$1,899; wood **ARMCHAIRS**, \$399 each, Mobilia. Tibetan sheep wool **THROWS**, \$120 each; wool **RUG**, 5' x 8', \$1,000; EQ3. Rope **PENDANT**, \$199, Urban Barn. **WALL ART**, 24" x 36", \$100, Bouclair. Linen and cotton table **RUNNER**, 18" x 90", \$100, Crate and Barrel.

Right Linen and cotton **TABLECLOTH**, 60" x 120", \$180, Crate and Barrel. Wood **TRAY**, \$38, Zone. **JAR**, \$12; brown ceramic **VASE**, \$17; white ceramic **VASE**, \$15; EQ3. Ceramic **MUG**, \$35 for 4; ceramic cups, \$8 each; small stainless-steel **GRATER**, \$5; Linen Chest. Organic cotton **TEA TOWEL**, \$24, Buk & Nola. Small ceramic **SCOOP**, \$5, Vdev.



Home Comforts

BLACK ACCENTS BRING DEPTH TO A TABLETOP FEATURING LIGHT WOOD, AND NATURAL TONES AND TEXTURES.

Left Ceramic **TRIVET**, \$19; ceramic **MUG**, \$35 for 4; Linen Chest. Ceramic **PLATE**, \$15; ceramic **BOWL**, \$9; linen **NAPKIN** (on plate), \$8; Zone. Linen and cotton **NAPKIN**, \$13, Crate and Barrel. Fabrique 1840 Porcelain **BOWL** by Celina M.S.K Studio, \$95 for 2, Simons (online only). Ceramic **CREAMER**, \$20, Buk & Nola. **CUTLERY**, \$40 for 5 pieces, Urban Barn. Water **GLASS**, \$5, H&M Home.

Olive Oil & Almond Cake

Delicate citrus, almond and floral notes in our Olive Oil and Almond Cake will delight the senses.

RECIPE TEST KITCHEN | PHOTOGRAPHY MAYA VISNYEI

INGREDIENTS

MAKES 8 TO 10 SERVINGS

- 1½ cups all-purpose flour
- ½ cup finely ground almonds (almond flour)
- 1 tsp baking powder
- ½ tsp salt
- ¼ tsp baking soda
- 1¼ cups granulated sugar
- 2 tsp orange zest
- 3 eggs
- ¾ cup extra-virgin olive oil
- ½ cup homogenized or 2% milk
- ¼ cup orange juice
- 1 tsp vanilla
- ¼ tsp almond extract
- 3 tbsp toasted sliced almonds
- 3 tbsp chopped pistachios (optional)

Glaze

- 3½ tbsp granulated sugar
- 2 tbsp orange juice

DIRECTIONS

Preheat oven to 350°F. Mist 9-inch springform pan with cooking spray; line bottom with parchment paper. Dust with flour, tapping out excess.

In bowl, whisk together flour, ground almonds, baking powder, salt and baking soda.

In large bowl, rub sugar with orange zest until fragrant. Add eggs; whisk until light in colour, about 30 seconds. Whisk in oil, milk, orange juice, vanilla and almond extract. Add flour mixture; whisk until smooth. Scrape into prepared pan.

Bake until golden brown and cake tester inserted in centre comes out clean, 45 to 50 minutes. Run paring knife around edge; let cool in pan on rack for 10 minutes.

Glaze Meanwhile, in small saucepan, bring sugar and orange juice to boil over medium heat; cook until thickened, 1 minute.

Remove collar from cake; transfer to rack. Brush glaze over side and top of warm cake. Sprinkle immediately with almonds and pistachios (if using). Let cool.



tip

Olive oil cakes are light and luxuriously delicate; they improve the longer they sit. Serve with thick yogurt for afternoon tea or as an anytime snack.





◀ Heart pattern **GLASS**, \$13, Marks and Spencer, marksandspencer.com.



▼ Orazi **NAPKIN**, \$8, Crate and Barrel, crateandbarrel.ca.



▶ Slink Gold **NAPKIN RINGS**, set of 8, \$96, CB2, cb2.com.



shopping



◀ Frédérique Bonmatin two-tone stoneware **HOWLER**, \$38 each, Chic & Basta, chicbasta.com.

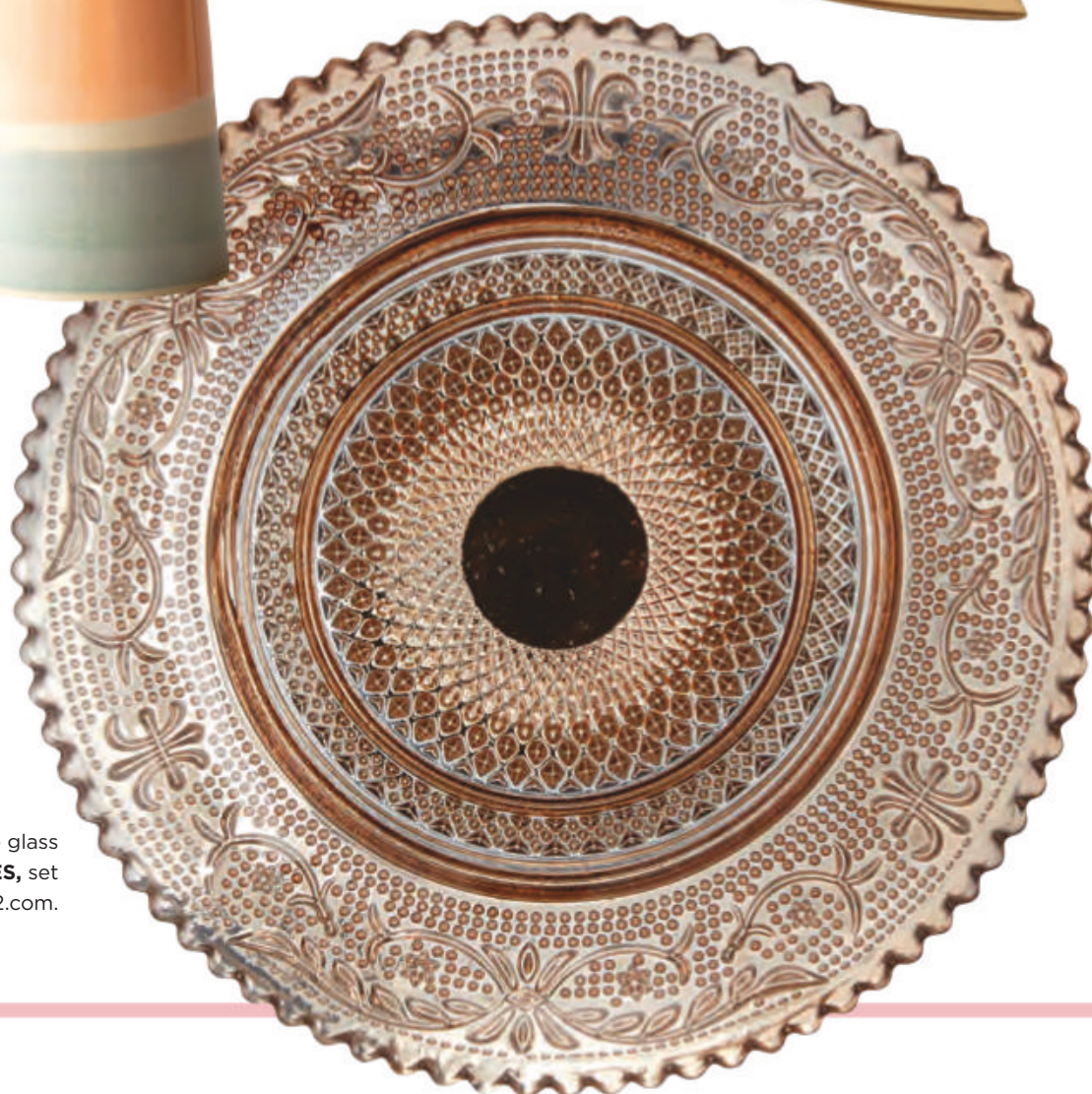


◀ Sophie Conran **CAKE SERVER**, \$30, Linen Chest, linenchest.com.

▼ Christian Roy **LATTE BOWL**, \$32, Chic & Basta, chicbasta.com.



▶ Bronze glass **APPETIZER PLATES**, set of 8, \$20, CB2, cb2.com.



**“With new Always Discreet,
I feel protected with a pad
I barely feel.”**



Unlike Poise pads, new Always Discreet locks away liquid without all that bulk.

30 ml fluid insult per pad, Poise Maximum Long vs. Always Discreet Heavy Long

high OR low?





Two luxurious moody blue bedrooms:
one designed with a lavish budget, the
other, lean. Can you tell which is which?

PRODUCER PETER PAQUETTE | **PHOTOGRAPHY** MARK BURSTYN

HIGH \$7,201

\$254

1 Melange solid **PILLOW** and insert in indigo, RH, rh.com.

\$300

2 Fontaine blue cotton **QUILT**, Crate and Barrel, crateandbarrel.ca.

\$795

3 Organic Italian 600 thread count sateen **SHEET SET** in Natural, RH, rh.com.

\$269

4 Asymmetry ceramic **LAMP**, West Elm, westelm.ca.

\$25

5 Silvie bedside **CARAFE**, EQ3, EQ3.ca.

\$1,748

6 Bernhardt Sasha and Kai **SIDE TABLES** (\$919, \$829), Home Soci ete, homesociete.ca.



PAINT, Stiffkey Blue No. 281, Farrow & Ball. **Malm BED**, IKEA. Jean Paul Gaultier Virevolte **PILLOWS**, Roche Bobois. **LACKWOOD ART**, Renwill. **PLANT AND POT**, Cool Green and Shady. **BOOKS**, Indigo.

\$387

7 Washed organic cotton **DUVET AND SHAMS** (2), Crate and Barrel, crateandbarrel.ca.

\$99

8 Cora velvet **PILLOW**, Renwil, renwil.com.

\$495

9 Helen **END TABLE**, Maison Corbeil, maisoncorbeil.com.

\$570

10 Kuka slipcovered **CHAIR**, Maison Corbeil, maisoncorbeil.com.

\$2,259

11 Indian Shalimar hand-knotted wool **RUG** in burgundy (11'4" x 11'4"), ECARPETGALLERY, ecarpetgallery.com.

LOW \$2,142

\$14

1 Chenille **PILLOW** in blue, HomeSense, homesense.ca.

\$100

2 Fiji linen **THROW** in indigo, EQ3, eq3.ca.

\$45

3 Nattjasmin sateen **SHEET** set in white, IKEA, ikea.ca.

\$119

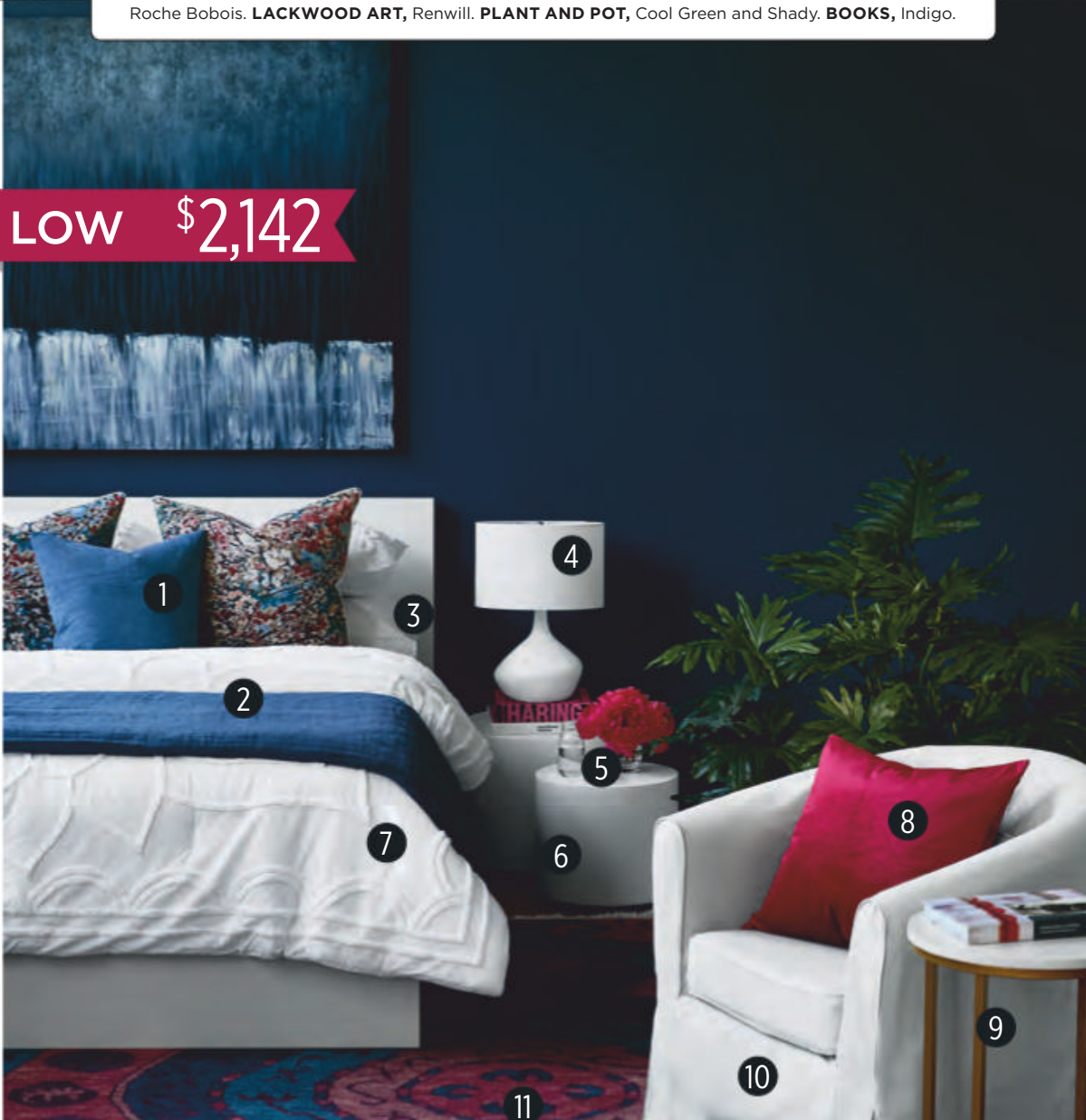
4 Esperanza Ceramic **LAMP**, Urban Barn, urbanbarn.com.

\$10

5 Glass bedside **CARAFE**, Amazon, amazon.ca.

\$119

6 White nesting **SIDE TABLES**, Structube, structube.com.



\$99

7 White **COMFORTER AND SHAM SET** (2), HomeSense, homesense.ca.

\$20

8 Velvet throw **PILLOW** in Raspberry, HomeSense, homesense.ca.

\$109

9 Wasser **END TABLE**, Wayfair, wayfair.ca.

\$199

10 Tullsta slipcovered **CHAIR** in beige, IKEA, ikea.ca.

\$1,308

11 Indian Shalimar wool **RUG** in Dark Pink (9'4" x 11'), ECARPETGALLERY, ecarpetgallery.com.

∨ HIGH



\$1,845

Benton ceramic table
LAMP, Elte, elte.com.



\$850

Pesaro steel and resin
table **LAMP**, RH, rh.com.

LIGHT THE WAY

Set the style and create a calming mood with a bedside light that fits your budget.



\$80

Ceramic table
LAMP, Bouclair,
bouclair.com.



\$56

Vatto ceramic table
LAMP, Structube,
structube.com.

∧ LOW

Floor Show

Once you've enjoyed the comfort of a rug in the bedroom, you won't ever go back to naked floor boards. Choose one that's large enough to extend beyond the foot of the bed and on each side. It will draw the eye to the room's natural focal point and define the sleeping area. For an instant cozy nest effect, there's nothing better.

Bungalow Rose's Harrold Oriental polypropylene **RUG**, 7' x 10', \$265, wayfair.ca.



Side Story

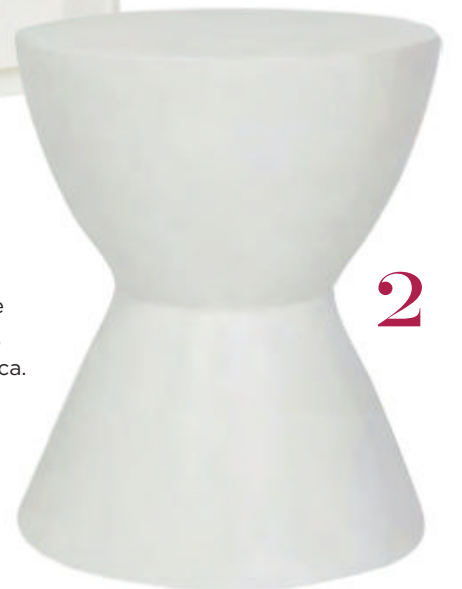
3 OPTIONS

To give your bedroom personality, avoid the matching bedroom suite effect and bring in mismatched furnishings. As a departure from the predictable traditional bedside table, opt for one - or two! - pedestal-style side tables with a trendy curved or geometric shape. Concrete and other slightly textured materials are very *au courant*.



1

1 Drummond Pull-Up Resin **SIDE TABLE**, 13" x 21", \$1,376, Elte, elte.com.



2

2 Joss & Main concrete **SIDE TABLE**, 17" x 14", \$250, Wayfair, wayfair.ca.



3

3 Cape ivory colour cement **SIDE TABLE**, 16" x 18", \$39, CB2, cb2.ca.

2021's Top 5 Design Trends

Contributing Editor Karl Lohnes forecasts design directions for 2021.



Big changes are coming to the decorating world this year. From walls awash in pattern and texture to a warming trend in the new neutral palette, we've got the scoop on what design trends you'll love in 2021.



Barbara Barry Midsummer **FABRIC** Collection, kravet.ca.

PAINT (top to bottom), Gallery Grey, Maple Leaf, Soft Candlelight, Unforgettable, valspar.com.



Silestone Loft Collection quartz **SURFACING** in Seaport, cosentino.com.



Odyssey **LOUNGE CHAIR**, housewarmings.ca.

TREND 1

Warm Beige

Comforting colours are on the horizon for 2021, so say goodbye to cool greys and hello to greige and beige. That doesn't mean you have to start from scratch: add beige tones to existing grey schemes to transition your look to a warmer, richer palette. Look for colours like saddle (a luscious brown) or caramel (a tawny beige). Think soothing, soft, lush.

TREND 2

Modern Industrial Style

Not since the '80s have we seen this level of popularity for industrial style throughout our homes. Expect to see concrete looks on surfaces, wired industrial glass in doors, screens and room dividers, and exposed rusted-metal ceiling beams.



Murdesign Vesper **DECORATIVE PANELS** in chevron wood, rona.ca.



TREND 4 Textured Walls

If wallpaper and murals feel too busy to you, then this trend might be welcome. The texture of wood, brick or Venetian paint finishes will add interest and subtle texture to walls in 2021.

Embossed paintable brick white **WALL PANEL**, lowes.ca.

TREND 3 Wall Murals

The popularity of wallpaper has increased significantly over the past few years, and now we're seeing full-scale murals and large prints adding big impact to both large and small spaces. Four walls or only one? Depends on the effect you want to achieve. A large print mural on all four walls will enclose a space and make it feel cozy; covering only one wall creates a focal point.

Scholar Collection's Andrew Martin Great Gatsby **WALLPAPER**, kravet.com.



Turkish colour-transition wool and cotton **RUG**, ecarpetgallery.com. **BENCH**, homesense.ca.



TREND 5 Millennial Granny Style

Making decor choices that evoke memories of granny's house will be a big trend this year, led by the millennial generation's signature way of blending old and new. Even the most modern space can hold a vintage quilt, carpet or dinnerware that adds a passed-down, traditional touch to our spaces.

Designer Stephanie Charest transforms an unfinished Calgary basement into a family retreat with designated areas for fun and relaxation.

TEXT CHRISTY WRIGHT | PHOTOGRAPHY JOEL KLASSEN

Traditional nature prints are a fun contrast to the contemporary mood.

Comfort ZONES



It's

hard to believe that this welcoming basement – now enlivened with handsome walnut cabinetry, lyrical shades of teal and fresh, unfussy furniture – was once a storage space. “It was completely undeveloped with cold concrete floors and exposed studs,” says Stephanie. “I wanted to make it cozy and warm, yet bright, so it wouldn’t feel like a basement.” Aesthetics weren’t the only issue to flesh out. A busy couple with three teenagers lives here, so configuring the space to suit all of their needs was paramount. “It was important to have zones for specific functions,” she says. Indeed, watching TV, playing pool and savouring an espresso are now stylishly possible and beautifully in sync with the dynamic new surrounds.

GAME ZONE

The pool table feels more like a cohesive piece of furniture thanks to designer Stephanie Charest’s eye. “I had it custom-designed to coordinate with the walnut cabinetry I used throughout,” she says. A gallery wall lifts the sporting mood to stylish, and Stephanie loves the playful placement of the more traditional prints. The fab pendant light was a design coup – the shade echoes the metal mesh of the bar shelves and protects the bulbs from stray ping-pong balls (the billiard table converts to a table tennis surface). Walnut display shelves ingeniously conceal a structural post.

DESIGN, Stephanie Charest, Stephanie Charest Interior Design. **CONTRACTOR**, Unique Projects. **WALNUT CABINETRY**, Superior Cabinets. **WALL AND TRIM PAINT**, Cloud White OC-13, Benjamin Moore. **FEATURE WALL PAINT**, Needlepoint Navy SW0032, Sherwin-Williams. **FLOORING**, Divine Flooring. **POOL TABLE**, Recreation World. **CURRY AND COMPANY PENDANT LIGHT, OTTOMANS**, CF Interiors. **CUSTOM SOFA CUSHIONS**, Tonic Living (white with lines); Etsy (floral Schumacher fabric).



— TREND —
CHIC SHARED
SPACES

The TV doesn't dominate thanks to a pop of blue, clever moulding and a stylish sconce.

LIVING ROOM

"I love the TV wall's blue paint for a pop of colour against the bright white, and for the way it flatters the warm walnut," says Stephanie. To soften the effect of the large TV, she finished the wall behind it with reveal details and elegant sconces. "They all add interest without competing with the TV." Floating cabinets maximize closed storage and the seating was chosen with family living in mind. "A big comfy sofa was a must for movie nights, and the armchairs actually swivel, so are a perfect solution - no one feels jaded they had to have a chair seat!"

Robert Abbey **SCONCES**, Robinson Lighting & Bath. **SOFA**, Stylus. **CHAIR**, Cricklewood Interiors. **SIDE TABLE**, Maria Tomás. Orange **CUSHION**, (on chair), Tonic Living. **RUG**, West Elm.





BAR

Stephanie chose hard-working quartz for the countertops at the bar. “The couple are wine aficionados and also have an espresso machine here, so the countertop had to stand up to potential stains,” says the designer. Black leather stools with gold bases are easy to wipe clean, and backs make them extra sturdy and comfortable. Suspended black-steel shelving adds visual interest and even more storage, but feels open thanks to metal mesh caging.

Metal **SHELVING**, 3 Fab Metal Manufacturing. **SINK, FAUCET**, Robinson Lighting & Bath. **BACKSPLASH**, Tierra Sol. **BARSTOOLS**, CB2.

First-Place FINISH

Designer Tiffany Piotrowski takes a basement from unfinished to unbelievable.

TEXT CHRISTY WRIGHT | PHOTOGRAPHY PATRICK BILLER



To call

this basement in Erin, Ont., “finished” is a bit of an understatement. First, there’s the sheer size of it – a whopping 3,500-square-foot – then there are its various zones, which range from the expected seating area and playroom to the not-so-expected pottery studio, cinema and home gym. It was designed with the owners’ interests in mind (they’re a young couple with two little girls and a dog) and decorated to be fun without being frivolous. We get that not all of us can deploy this basement’s amenities into our own, but we can take away Tiffany’s brilliant design tips that will change how you think about lighting, make furniture choices, and use white in a basement.

PLAY ZONE

“Basements are the perfect place for maximizing storage and I like to blend custom systems with free-standing options. In the playroom, I paired custom-built toy storage that incorporates a desk, drawers and a fun reading nook (complete with a comfy fitted cushion and its own light) with inexpensive baskets that corral the girls’ most-loved toys. Everything serves a function.”

DESIGN, CUSTOM CHALKBOARD, Tiffany Piotrowski, Tiffany Leigh Design. **CONTRACTOR,** Kingsgate Construction. **Simply White OC-117 WALL PAINT,** Benjamin Moore. **SCONCES,** Rejuvenation. **ART,** Juniper Print Shop. **POUFS,** Wayfair. **WOODEN CHAIRS,** EQ3. **KIDS’ TABLE, CHAIRS,** RH Baby & Child.





“To keep things interesting, I punctuated the space with hits of black, textural elements like textiles, and fun patterns and colour.”



LIVING AREA

“In the seating area, a big comfy sofa with a single seat cushion is the place to hang out or have a nap. Because the sofa’s slipcover goes straight to the ground – just like the large leather ottoman does – I broke up the heavier impact with chairs that have a lighter, more sculptural presence.”

BASKETS, Elte Mkt. **VESSELS**, TLD Curated. **LIGHT**, CB2. **CUSHIONS**, Rug & Weave. **CUSTOM SEAT CUSHION**, Tonic Living. **HARDWARE**, Myoh. Cane **CONSOLE**, Niche Décor. Custom **SOFA**, Gresham House. Sofa **FABRIC**, Tonic Living. **CHAIRS**, Article. **OTTOMAN**, **LAMP**, CB2. **ART**, Juniper Print Shop. **MIRROR**, Wayfair.



— TREND —
BEIGE
IS BACK

Tiffany's 5 tips for a top-level basement

In the Zone

"Basements should reflect the way we live and, ideally, have something for everyone. This is a space for the family, so I ensured there was a dedicated zone for each member. The father has his gym space, the mother has a pottery studio to work on her craft, the girls have a playroom, even the dog has his own shower room. There's a comfortable seating area for hanging out as a family, and a home theatre for everyone to enjoy."

Light Fantastic

"All basements need a mix of lighting – think ambient, task and decorative. I use pot lights for ambient lighting, and I can't stress this enough: whenever you add pot lights, make sure they're on dimmers! Wall sconces are a wonderful way to layer in task-oriented lighting. I used them above

the desk area and added a flush-mount one in the reading nook. Decorative lighting finishes any room, so I included a table lamp in the basement's seating area. A good lighting rule of thumb: play with scale and mix materials for visual interest."

White Out

"Breaking news: white isn't always right in a basement! In fact, if there isn't a lot of natural light, I would not recommend it, as artificial lighting can make white paint appear yellow and dingy. In a darker basement, go with dark, moodier walls like what we used in the wine cellar and home theatre entrance. This basement, however, has lots of natural light, so white walls in a flat finish work well here and keep things feeling bright and airy."

Good Shape

"When choosing furniture, especially in a basement, it's all about striking the right balance so there's an interesting mix of shapes to keep the eye moving throughout the room."

Neutral Territory

"Neutral doesn't have to mean boring when the finishes are tactile and inviting. Vintage rugs in muted tones are perfect for basements because they wear like iron and hide a multitude of spills. The seating area's antique rug is a showstopper, while the plain, muted broadloom in the girl's play zone is super plush, as playing on the floor is still a big part of their day. Textures, like the caning on the media console and the nubby ottomans, feel natural and add coziness to a neutral scheme."



POTTERY STUDIO

One of the homeowners is an avid potter so a home studio (left), complete with a vintage-look sink, makes working on her craft and cleaning up afterwards a breeze.

SCONCE, Schoolhouse Electric. **SINK**, Etsy. **FAUCET**, Kingston Brass. **FLOOR TILES**, Factory Tile Depot. **WOODEN HOOKS**, H&M Home. **CABINETRY HARDWARE**, Myoh.

BATHROOM

The bathroom (below) is near the gym and has a steam shower, so Tiffany wanted it to feel like a spa. Mosaic marble floor tiles create a luxe feel and the wood vanity dressed with brass fixtures imparts warmth to the otherwise cool colour scheme.

Custom **VANITY, MIRROR**, Tiffany Leigh Design. Flush-mount **LIGHT**, Hudson Valley Lighting. **SCONCES**, Circa Lighting. **ROYAL BLANC QUARTZ COUNTERTOP**, Hanstone. **FAUCET**, Watermarks Kitchen and Bath. **HARDWARE**, Myoh. **FLOOR TILES**, Factory Tile Direct.

“I believe ‘basement’ and ‘basic’ are not synonymous! Basements are definitely worthy of special finishes in their own right.”





DOG SHOWER

This shower room (above) is every dog owner's dream. Tiffany went beyond the utilitarian aspect of this highly practical feature and elevated the aesthetic with glass tiles, burnished brass fixtures and graphic artwork.

PRINTS, Juniper Print Shop. **TILES**, Factory Tile Depot. **FIXTURES**, Delta Faucet. **DOOR KNOB**, Emtek. **RUG**, IKEA.

MUDROOM

Since the basement connects to the garage, Tiffany reimagined this entry point as a small mudroom (right) with a bench, shoe shelf and baskets for dog walking supplies. This keeps backpacks, jackets and boots from piling up by the door. Bonus: it's close to the custom dog shower.

BASKETS, Elte. **ART**, Juniper Print Shop. **FLOOR TILES**, Factory Tile Depot. **WOODEN HOOKS**, H&M Home.





— TREND —
LUXE ROOMS
FOR R & R



THEATRE & CELLAR

“I wanted the wine hallway leading to the cinema to feel like you’re having a movie-going experience,” says Tiffany. “The dark paint colour allows the custom brass cinema sign and marquis lighting to shine in this space, yet still feels sophisticated and cool. It’s a dark and moody ‘wow’ moment in an otherwise light and bright basement.”

SEATING, Station Earth. **WALL PAINT**, Kendall Charcoal HC-166, Benjamin Moore. **SCONCES, PENDANTS**, Elte. **CARPETING**, Tielemans Interiors.



WORK IT OUT

“With more of us working out at home, personal gyms are becoming a lot more common. They require a lot of practical considerations - like the spacing of equipment and safe flooring material. I chose a vinyl, non-slip floor that’s good for shock absorption on joints and can take the dropping of weights. I wanted the gym to have a slightly industrial feel, so I clad the wall in a brick veneer for an architectural element and, again, to add some contrast. I love the way the vinyl floor looks like concrete.”

VINYL FLOORING, Fibre and Cloth.



1 BOOKCASE 3 WAYS

No matter what look you love, shine a spotlight on it by styling your shelves like a pro.

PRODUCER JULIE LAPOINTE | PHOTOGRAPHY TANGO

Fashionista

These shelves incorporate today's top trends with art in muted colours, objects with strong graphic shapes and pottery and textiles with a handcrafted feel.

Pro Styling Tips

- Repeat colours and shapes throughout the bookcase to create balance.
- To create more dynamic lines, place books on different shelves, laying some horizontally and propping others vertically.
- Put items with visual bulk (like the storage boxes shown here) on the bottom shelf so the bookcase doesn't seem top heavy.



Metal Shelf \$249,
Structube.

1. Prints, \$16 each, Opposite Wall. Wood photo frame, \$24 each, DeSerres. Glass candle holder, \$23, Crate and Barrel. Ceramic jug, \$20, Bouclair. Cotton flower branch, \$16, Veronneau. Small grey ceramic vase, \$15; small rust ceramic vase, \$8; EQ3. **2.** Chrome-plated steel lamp with glass shade, \$40, IKEA. **3.** Artificial plant branch, \$9 each; floral arrangement with ceramic vase, \$150; Veronneau. **4.** Ceramic rhinoceros, \$13, Structube. **5.** Oui Collection grey ceramic vase, \$30; black ceramic pot, \$18; Indigo. **6.** Print, \$58; wood frame, \$39; Buk & Nola. Metal candlestick, \$13; ceramic and wood face sculpture, \$35; H&M Home. **7.** Assortment of three cardboard boxes, \$40, Indigo. **8.** Acrylic throw, \$89, Zone. Watkins plaid throw, \$39, Urban Barn.

Be creative: shelves aren't only for books and objects. Display everyday items that have interesting shapes.

Rock Star

The entertainer and music lover can create an altar to their twin passions by propping instruments (which are strong sculptural elements) alongside barware and bottles; frame and display a favourite album cover for a great conversation piece.

Pro Styling Tips

- ▶ Think outside the box. The guitar is an unexpected element in a bookshelf, but the unit provides ideal storage and display space for it.
- ▶ Create a strong centre; the dog sculpture is a commanding focal point.
- ▶ Use crates and boxes to corral loose objects.



1. Stainless-steel-and-wood bar tool set, \$96; glass decanter, \$80; Crate and Barrel. 2. Desk clock, \$60, Crate and Barrel. Ceramic candle, \$26, VdeV. Glass martini glass, \$13 each, H&M Home. Wood record album frame, \$16, Michaels. 3. Paul Reed Smith electric guitar, price on demand, Long & McQuade. 4. Resin Dog, \$89, Urban Barn. 5. One SL speaker, \$229, Sonos. 6. Stackable metal wine rack, \$40, EQ3. 7. Glass jug with wooden lid, \$25, EQ3. Plastic jewelry box, \$55, Crate and Barrel. 8. Wood and metal crate, \$25, Bouclair.

Introduce contrast by displaying objects with organic shapes on strongly graphic shelves.

Zen Master

The strong graphic lines of this bookcase are a perfect foil for the organic shapes of plants. If you don't have a spot near a bright window, use plants that require low light levels or sneak in some realistic-looking artificials.

Pro Styling Tips

- Mix things up visually by introducing planters in a variety of colours, textures and shapes.
- Group objects of different heights together on each shelf.
- Create a theme: here we have a peaceful Zen garden vibe with plants, natural textures and Buddha sculptures.



1. Stoneware planter, \$4; artificial potted plant, \$10, IKEA. Metal and glass hourglass, \$64, VdeV. Artificial plant with rattan flowerpot, \$60, Bouclair. Ceramic elephant planter, \$12, VdeV. Artificial succulent, \$6 each, Veronneau. Stoneware planter, \$7; artificial potted plant, \$8; IKEA. 2. Battery-powered LED table lamp, \$50, IKEA. Small and large terracotta flowerpots, \$9 and \$13, VdeV. 3. Artificial potted cactus, \$23; stoneware planter, \$8; IKEA. 4. Ceramic plant pot, \$17, VdeV. Artificial succulent, \$9, Veronneau. Succulent, \$60 (set of 4, featured on shelves 4, 5 and 6), Crate and Barrel. Wood candlesticks, \$16 each, Urban Barn. 5. Artificial plant in ceramic pot, \$30, Bouclair. 6. Flower pot on legs, \$30, Veronneau. Ceramic Buddha head, \$15, Bouclair. 7. Metal Buddha, \$65, Structube. 8. Seagrass basket, \$26, VdeV.

MODERN LOVE

An artful mix of colour, texture and unique furnishings gives this loft a look that's highly personal and right on trend.

TEXT MARTHA UNIACKE BREEN

PHOTOGRAPHY JAMIE ANHOLT



Crisp black and white makes a clean backdrop for a colourful collection of art and furnishings.

DESIGN, Tara Marshall and Meghan Bannon, Fort Architecture. **CONSTRUCTION**, Rawlyk Developments. Minotti Freeman **SOFA**, Sollos Wed **CORK SIDE TABLE**, Shaun Ford. **DISHES, CANDLESTICKS**, HomeSense. **DRAWER PULLS**, Richelieu. Hay **PITCHER, GLASSES, PINK VELVET CUSHION**, Ferm Living **TRAY**, Tom Dixon **BOWLS**, Kit Interior Objects. **APPLIANCE** and **CABINETRY HARDWARE**, Nouveau III.



This tiny above-garage loft, designed by Fort Architecture principals Tara Marshall and Meghan Bannon, strikes the perfect balance between cozy familiarity and modern style with an artsy edge. The owner wanted a place for her ever-changing collection of art, where she could read and relax away from the bustle of the main house just across the courtyard. Later, if desired, it can easily be converted into a one-bedroom apartment. The designers responded with a wonderfully personal space that's modern in spirit and form, and that draws on some of 2021's strongest design trends.

— TREND —
BLACK
KITCHEN



ROUNDING THE CORNERS

“We’re seeing a lot of softened corners, such as on the cork side table, the oval coffee table and the softly tufted sofa with its curved leather arms. We love to add a punctuation to interiors with the addition of sculptural furnishings in interesting shapes,” says Meghan.

MIX IT UP

“Mixing high and low – such as a vintage pottery find from a flea market next to the very high-end Minotti sofa – makes the space more approachable and dynamic. Putting big-box store finds with design-store investments just makes the whole space feel more authentic,” says Meghan.



HOME ARTS

“The owner has an extensive art collection and refined design tastes, so she wanted a place to display her art, objects and other pieces she’s collected in her travels. Because there’s such a mix of textures, colours and shapes, it’s very flexible: you can move things around without changing the space’s essential character,” says Meghan.

CLOCKWISE FROM TOP LEFT The kitchen’s reeded backsplash is an updated alternative to glass mosaic or tile; a blue heron painted on a black backdrop and placed on a black wall makes a strong statement; the client’s funky chessboard table is right at home here, setting off the cushy contours of a micro suede armchair.

Minotti Creed **ARMCHAIR**, **ARTWORK** (against wall) by Yellow Corner, wood **SCULPTURE**, Fan Moving **PORTRAIT** by Lars Zech, Shaun Ford. **YELLOW VELVET CUSHION**, H&M Home. **CLAY MUGS**, **DECANTER** (on kitchen shelf), Kit Interior Objects. **SINK**, **FAUCET**, Kohler. **SOAP**, Aesop. **TRACK LIGHTING**, Tech Lighting Industrial. Heron **ARTWORK**, by Brad Woodfin.



The small stove adds warmth and coziness, as well as making another strong vertical statement.

BD Barcelona Gaulino **OCCASIONAL CHAIR** (on right), Minotti Caitlin Marble **COFFEE TABLE**, Flatlandia Cartesia **RUG** by CC Tapis, Shaun Ford. **STOVE**, Friendly Fires. **BLINDS**, Designer's Choice. **VASES** (on floor), HomeSense.

— TREND —
ART RUG

GEOMETRY SET

“One thing we see that is very prevalent is a trend to modern, minimalist geometric forms in rugs, furnishings, fabrics, art prints. We fell in love with this rug for its sculptural sensibilities,” says Tara.

MODERN ORGANICS

“We love integrating organic textures and materials in a refined way. The cork table, again, has a strong natural texture, but its lines are quite refined and simplified. The matte-finish oak herringbone floor pattern adds a layer of underlying richness; it’s another way to add texture and dimension without being too obvious about it,” says Tara.



— TREND —
DRIED FLOWERS
& FEATHERS

BLACK ON BLACK

“Black adds a sense of drama to the space and a feeling of coziness that you just wouldn’t get in an all-white space. When softly lit with warm lighting, it’s incredibly comfortable and welcoming,” says Meghan.

TOP LEFT Another arresting contrast: the smooth lines of a graphic reeded vase with a soft arrangement featuring feathery silk fronds and large seed heads.

Muuto Ridge **VASE**, Kit Interior Objects. **FAUX FLOWERS**, Silk Plant Warehouse. **WALL PAINT**, Midnight Dream 2129-10, Benjamin Moore.

BELOW The elegance of the sofa is tempered by humble Home Depot industrial shelves, artfully styled with a mix of the client’s fave objects.

SHELVING, Home Depot. **BUBBLE VASE**, H&M Home. Ferm Living **PINK CUSHION**, Kit Interior Objects. **TAN CUSHION**, H&M Home.



In the bathroom, the same tile pattern in two different sizes adds a playful touch, while a narrower-than-standard vanity and recessed medicine cabinet conserve space.

RAIN SHOWER HEAD, FAUCET, THERMOSTATIC VALVE, Vox **VESSEL SINK**, Kohler. Custom **MIRROR/MEDICINE CABINET**, Tech Master. Mercury Row Yearby 2-Light Novelty **PENDANT LIGHT**, Wayfair. Micro/Macro 2 **PORCELAIN TILE**, Stone Tile. Black Marble Notched Cylinder **KNOBS**, CB2. **WALL PAINT**, Snow White 2122-70, Benjamin Moore.



COLOUR WORKS

“There’s a resurgence of soft colours from the ’80s and ’90s, or even the mid-century modern tones of the ’50s, like rose, light teal, grey-blue, burgundy. We used colour pops throughout the space to accent an otherwise monochromatic scheme,” says Tara.

Must-haves for a secluded reading corner: a supremely comfortable leather armchair and cozy black backdrop. “Painting walls black doesn’t have to be intimidating,” says Tara.

Mole **ARMCHAIR** by Lin Brasil, Minotti Joy **SIDE TABLE**, Iittala **BOWL**, **FRAMED PRINT** by Magi (artist), Shaun Ford. Ferm Living **CUSHION**, Kit Interior Objects. **WALL PAINT**, Midnight Dream 2129-10, Benjamin Moore.



— TREND —
LIVE
PLANTS

What design directions are influencing the influencers? Our Contributing Editor Karl Lohnes speaks to Canadian design phenom **Sarah Richardson** about 2021 trends.

Talking Trends



KL: Designers love to implement timeless elements in their decor schemes. What is your definition of a trend and do you follow them?

SR: To me, trends represent current fads and popular culture influences. I think trends get a bad reputation as fads due to their quick rise in popularity, and then suddenly they're everywhere. On the downside, trends end up becoming oversaturated ideas that inevitably feel time stamped, which makes them seem dated when the next wave of trends rolls in. On the upside, I like to think of trends as an expression of the creative stream of consciousness that finds many creatives from various places dreaming about the same influences at the same moment. Can we talk about historic smoky teal hues for a minute? I am loving them and have been grooving on this colour for a while and hope it doesn't become "done" in a New York minute.



Zig Zag Teal **RUG**, starting at \$1,500, Sarah Richardson for Palliser.



KL: How can someone incorporate a new trend into an existing decor scheme without changing everything in a room?

SR: That really depends on what backdrop you are starting with. I've forever been a proponent for making all the big choices in your home neutral, timeless and classic. Sure, I love colour and pattern and wow-factor design, but for the most part you'll find me making all the investment purchases in solid neutral choices so it's easy to layer in fun accents – a zingy printed pillow, a statement table lamp, or a scene-setting patterned rug. Add colourful throw and accent pillows, or a new piece of art to any neutral space, and presto...you've got a whole new vibe!

PAINT, Pacific Rim 678, Benjamin Moore. Zig Zag **PILLOW COVER,** \$50, Sarah Richardson for Palliser.



KL: What is one 2021 decor trend that you are glad to see?

SR: I don't want to call the design influences that I'm excited about "trends," as I worry it'll make them disappear too fast. I'm excited about consumers embracing vintage for the value of reusing and repurposing, and I'm always trying to champion the appreciation of artisanal and handmade elements for the soul and character they bring to every room.

KL: So many people say they like both modern and traditional style. What are ways to blend the two looks together?

SR: Carefully (lol)! The key to mastering the mix is not getting too eclectic, as you don't want your modern-trad mix to look like a yard sale. The easiest path to success is to select traditional items with simple, streamlined forms so you don't end up trying to mix pared-down modernism over top of trad!

KL: Can you share with us one new decor element that you will be implementing in your decor projects for 2021?

SR: I just read in a UK-based roundup that the "Arts & Crafts movement" is a trend for 2021. As someone who lives by the mantra of the wise William Morris – "Have nothing in your homes that you do not know to be useful or believe to be beautiful," – I'd love to dive back into some of the Morris & Co. that I grew up with as a child, and think about how to make them feel new and now.

Oh, Canada!

Always on the go with a new project, Sarah recently teamed up with Winnipeg-based furniture manufacturer Palliser to create four new whole-home collections – Annex, Vista, Boulevard and Shore. Each themed collection features furnishings for the bedroom, living and dining rooms, and includes a range of decorative rugs, throws and accent pillows, all in Sarah's signature elegant yet welcoming style. "My goal was to create a collection that offers something for every taste and style," says Sarah. "I worked hand-in-hand with each of the manufacturing teams on everything in the collection, all of which is made in Winnipeg." We're feeling the true patriot love for this all-Canadian design dream team.

SARAH RICHARDSON for Palliser, palliser.com.



Culture and design are inevitably linked, and 2021 trends reflect the seismic changes 2020 brought us.

Working from home has been the biggest shift that's had subtle and not-so-subtle impact on how we decorate and even think about our homes. This is good news for fans of home decor. Never has creating beauty, comfort and smart solutions to space challenges been more of a priority. Our experts highlight 2021's top trends, from art to pattern, and textures to tech — which will you embrace to make your home an inspiring haven?

1 JAPANESE INFLUENCES

Wabi-sabi, a Japanese Buddhist philosophy that invites one to find beauty in imperfection, resonates deeply these days. On the home front, it's merged with Scandi style into Japandi (a contraction of Japan and Scandinavia). Japandi focuses on natural materials, rich textures, artisanal ceramics, and the elimination of superfluous objects, says Montreal designer Sophie Sylvestre of Chrysalide Design. Drifting from Scandi's white palette, Japandi features off-white neutrals like taupe or buff, and pastels.

WHAT'S HOT IN 2021?



Nolta fabric armless
LOVESEAT, \$1,099; Ennora
PENDANT, \$119; Mobilia.





3 WOW FACTOR

It's all about investing in a "wow" element in 2021. Accent furniture in a contrasting colour, luxurious materials, objects with a story to tell – the key is to give character to your space. "The idea is to move away from settings where everything is the same," says Sophie Sylvestre. Go for custom furniture, original artwork, or introduce a daring material like marble with gold veins. Says Sophie: "Trust your instincts."

Sculpt **CHAIR**, \$1,399, Crate and Barrel.



2 MODERNIZED MID-CENTURY

Maybe because we're feeling a touch nostalgic, our interest in Mid-Century Modern continues. It's a style that's easy to reproduce: add gold metal accents, light wood tones and furniture with retro lines. Natalia David, director of trends and design at Home Depot Canada, also suggests playing with bright colours and retro shapes, and bringing in accents like vintage-style chairs.



Luisa **CHAIR**, \$1,299, CB2. Fayette **BAR**, \$1,999, Crate and Barrel.



4 FACE LINE ART

This style of drawing, where a single continuous line forms a face or silhouette, is increasingly sought after for minimalist interiors. This style of visual representation has an impressive lineage – Picasso and Matisse produced major artworks using this technique. Look for it on vases, cushions and canvases. It's a great way to add an artistic touch while maintaining a light feeling.

Ceramic **SCULPTURE**, \$35, H&M Home. **PRINT**, Mette Handberg Art Lines, set of 4, \$539; Sydney **CHARIOT**, \$1,219; BoConcept. Elson **CUSHION**, \$60, Rose Bonbon.



Hasslarp **CABINETS**, Sinarp **DOOR**, to come on Spring, IKEA.



6 THE INTELLIGENT HOME

Demand is increasing for smart home systems. According to André Allard, head of styles and trends at Rona, home automation can help us delineate between work and relaxation time by controlling lighting. “We are realizing the real benefits of integrating technologies into our daily lives,” he says. All the smart appliances are expected to grow in importance in the coming years, from personal virtual assistants and robots that clean floors to automated heating, security and entertainment systems.

Blink Outdoor Wire-Free **CAMERA SYSTEM**, \$331, Best Buy. Air Fry InstaView ThinQ **RANGE**, \$1,699, LG.

5 GEOMETRIC SHAPES

Strong geometric shapes on furniture and accessories, and in rug and tile patterns are on the rise. Geometric-pattern tiles also reflect the trend to handmade and have a less uniform look, says Sophie Sylvestre. “This brings an artisanal touch to modern geometric shapes.”



RUG, 5' x 8', \$499; Keenan large **SIDEBOARD**, \$2,299; Crate and Barrel.





Surface Design white marble pattern decorative **WALL PANEL**, 4' x 8', \$539, Rona.

7 CUSTOMIZED FOR COMFORT

One positive effect of staying at home is that people have more time to create the space they've always wanted, says André Allard. "We are doing the small jobs that have been waiting for months," he says. "We are looking for ways to update our home and make it more comfortable." Montreal designer Fay Martel of Concept SM2 agrees: "We want to create a comforting bubble, functional, ergonomic and focused on well-being. Teleworking is changing the way we think about living space and interior design has taken on great importance."



8 PLANTSCAPES

Gardening indoors and out is a new passion. Indoor plants – including hanging and potted plants, terrariums, green walls – are all popular. Bonus: plants help to clean air and revive mood. Our love for the natural world extends to non-living elements: look for botanical prints, with a continued emphasis on oversized blooms and foliage in wallpaper patterns.

Umbra Triflora White Hanging **PLANTER**, \$60, homedepot.ca. Artificial **WATER CANNA**, \$220; artificial **PHILODENDRON**, \$110; Veronneau.



9 RATTAN AND WICKER

Interest in woven rattan objects and furniture, including sea grass rugs, cane chairs and large open-weave pendant lights, continues. We love the cool, exotic, "beach vacation" feel they bring inside. These materials blend easily with existing decors, which may explain their meteoric rise in popularity.



Metal and bamboo **PENDANT**, \$129, Rona. Nomad **MIRROR**, \$180; **HEADBOARD**, starts at \$550; Rose Bonbon. Nadia **CHAIR**, \$549, CB2.





Shany six-drawer velvet-covered **CHEST**, \$399, Structube.



10 MAXIMIZING OUR HOMES

More than ever, especially with the pandemic, we want to maximize the potential of our spaces, especially in small interiors, says Liana Thomson, accessories product developer at EO3. “We spend more time at home than ever before, so people are focusing on the multifunctional aspect of their decor,” she says. As well, no space is wasted, and we’re learning to integrate inviting, discreet and functional home offices.



DESK, \$690, Alphabet. Aura **LAPTOP TABLE**, \$295, Agence Aura.



11 CURVED SHAPES

Here’s a trend that all experts agree on: an inclination for round shapes. “The curves are reminiscent of nature and respond to our need for softness,” says Fay Martel.

Archer **NIGHTSTAND**, \$599, CB2. Josephine **CHAIR**, \$2,199, Crate and Barrel.



Osaka **SOFA**, \$7,159; Charlotte **ARMCHAIR**, \$3,069; Borholm **COFFEE TABLE**, \$399; BoConcept.

12 LIGHT WOODS

Our recent love affair with Scandinavian style has brought pale woods with ashy undertones to the forefront, with white oak and maple in the lead. Whether on flooring, kitchen cabinets or wall cladding and panelling, we like light woods for their homogeneous shades and regular grain, explains Montreal designer Jean Stéphane Beauchamp. “Their beautiful neutrality goes with everything,” he says. “Nowadays, people need light, nature. Another benefit of light shades on the floor is that they’re more forgiving, so scratches and dust aren’t as noticeable.”

13 THAT '70S SHOW, AGAIN

Movies and TV series are keeping our focus trained on the 1970s, so look for chrome, clean lines, graphically strong patterns, a lounge-y feel, and colours like khaki, orange, brown, purple, says Fay Martel.



Lawndale Leather **DAYBED**, \$2,899, CB2.

ON THE HORIZON IN 2021

- Textured wall finishes
- Black kitchens
- Round area rugs
- Herringbone patterns on wood, furniture and cabinets
- Terrazzo
- Walls covered with slats
- Painted floors
- Strict minimalism
- Kitchen cabinets without cabinetry hardware
- Large wall murals
- Coloured ceilings
- Dark bathrooms
- Loopy wool
- Large-format porcelain tiles

14 BUY LOCAL AND HANDMADE

Mass-manufactured objects are out; hand-made crafts by local artisans are in. This welcome trend brings a highly personal, relaxed and slightly boho feel to decor. The turn to a handcrafted look ushers in a new palette, with all the richness of terracotta, nude hues and desert colours for art and everyday objects.

Heart **POSTER**, \$46, Etsy.



Colours of the Year

Does anything transform a room – or date it – faster than colour? Luckily, embracing colour trends is easy. There’s no better or easier way to refresh your home than with a new coat of paint. The biggest trend in 2021 is a shift to soft, soothing warm neutrals – just what we need! And we are loving the new delicate and bright tones of blue and green that are so optimistic. Bring it on – or paint it on, as the case may be!



DANCING IN THE RAIN

Beauti-Tone • C20-5-0644-0

This pale, almost powdery blue is a must-have in a nursery or any room you want to imbue with a soothing softness.

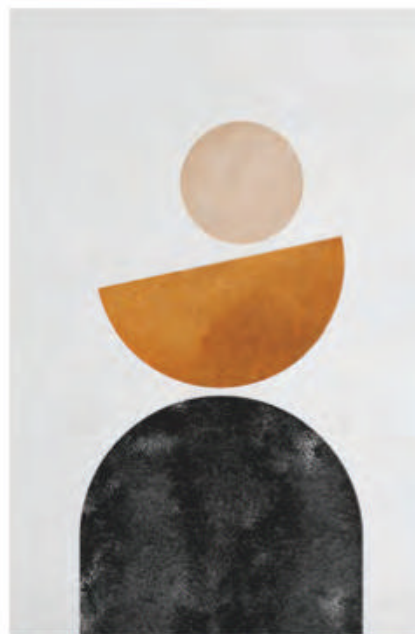


Wool and cotton **RUG**, 4' x 6', \$399, Crate and Barrel. Gladom metal **SIDE TABLE** with removable top, \$25, IKEA. Liv velvet **BENCH**, \$169, Structube.



SAFFRON STRANDS

BEHR • PPU6-02



Rich and vibrant, this colour, reminiscent of glamorous 1970s decor, will add a dash of spice to any space.



Geo II **CANVAS**, Kozy X Oleka Collection, \$70, Boutique Kozy. Sweel medium **PENDANT**, \$395, Nüspace. Stasia velvet **SOFA**, \$759, Structube.

PHOTOGRAPHY: BEAUTI-TONE, BEHR



AEGEAN TEAL

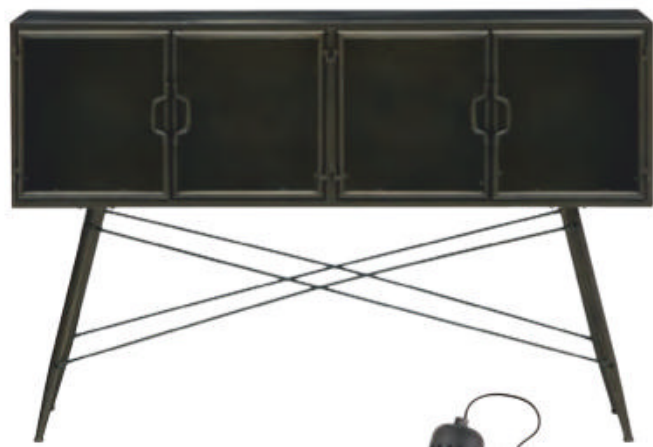
BENJAMIN MOORE • 2136-40



An undertone of grey gives this shade of blue-green a deep, soothing feel. As an accent wall, in a patterned fabric or in accessories, this shade is balanced and restful.



Elli wood **BARSTOOL**, \$69, Structube. Tofino wool **RUG**, 5' x 8', \$499, EQ3. Fyxnäs steel and fabric **FLOOR LAMP**, \$35, IKEA.



URBANE BRONZE

SHERWIN-WILLIAMS • SW 7048

This rich plucked-from-nature hue has a comforting hideaway vibe. We love it in the bedroom for its meditative quality. Natural pairings include pale wood and light stone colours.

Sara **SIDE-BOARD**, \$199, Structube. Tertial steel **DESK LAMP**, \$15, IKEA. Evella wood and fabric **ARMCHAIR**, \$700, Mobilia.



Calm and tranquil is the mood that this light, sandy taupe-tan exudes. It's ideal for creating a serene yet warm decor.



TRANSCEND DULUX • DLX1079-4



Modular **SOFA** in Cloud fabric, \$1,599, Mobilia. Woven-effect **CANDLE**, \$10, Bouclair. Swirly hand-painted **PAINTING**, \$599, CB2.



BLUE-WINGED WARBLER SICO • 6160-52



Inspired by nature, this refreshing and cheerful turquoise owes its name to the beloved North American songbird. In your rooms, it will lift your spirits like its namesake's song!

Adelaide **OFFICE CHAIR**, from \$829, BoConcept. Glass **VASE**, \$10, Bouclair. Lidhult **SOFA**, \$999, IKEA.



JANUARY/FEBRUARY 2021



NEW DIRECTIONS

This year, the new year is more welcome than ever before. If you're like us, you're ready for a fresh new look and outlook! Now's the time to sit back and study 2021's new design directions, and then decide how to put your own spin on them, because when you refresh your home, you notice it anew and appreciate it more. And in the end, appreciating what you have is the best New Year's resolution to make and keep.

HOLLYWOOD NORTH

Glamour and the golden age of film inspired Jennifer Backstein's design of a home that blends opulent style with family-friendly finishes.

TEXT BETHANY LYTTLE

PHOTOGRAPHY JENNIFER BACKSTEIN INTERIORS





Silver-screen glamour defines the home. In the living area, romantic grey gauze drapes filter light and supply drama. “To accentuate the 13-foot ceilings, we added a floor-to-ceiling marble-veined porcelain fireplace surround,” says designer Jennifer Backstein. A silk rug grounds the seating area and a gleaming black-and-glass coffee table is set with a posh chess set and a book propped open for viewing. Two sleek black velvet armchairs help to both separate and connect the living and dining areas: their positioning defines each zone, while brass framing on these and the dining chairs forges a relationship. In the dining area, the highly reflective black porcelain tabletop grabs centre stage. Strategically placed throughout, faux-snakeskin pillows, vintage lamps and marble tables add sophistication and glamour.

DESIGN, Jennifer Backstein Interiors, JBI. Custom **CHANDELIER**, JBI. Custom **COFFEE TABLE**, JBI. **DINING CHAIRS**, Kelly Wearstler. Porcelain **FIREPLACE SURROUND**, Marble Trend. **SOFA**, Ethan Allen. **PILLOW FABRIC**, Kravet. Custom **LAMPS** and **END TABLES**, Carrocel Interiors.



Even with no red carpet, this is a grand entry. The high arch of the black-stained doorway frames a 1940s-style chandelier. Two posh stools provide a spot for removing shoes. “The bases are a polished finish, which is elegant, but the vinyl seats are easy to wipe clean, a must with young kids,” says Jennifer. A white sofa with leather piping and velvet pillows looks luxe, but high-performance fabric keeps it practical. The faux-zebra rug and ritzy cocktail table are pure Hollywood.

CHANDELIER, Arteriors.
STOOLS, Worlds Away. **SOFA**, CB2. **CUSHION**, Ralph Lauren.
MIRROR, Elte.



W

hen Toronto designer Jennifer Backstein was growing up, she loved watching Turner Classic Movies with her mom. “She’d point out details in the set interiors or the wardrobes,” says Jennifer. “Without realizing it at the time, I developed a deep appreciation for Old Hollywood.”

It’s something that influences the designer’s work to this day. “For one, I love working with black and white, reflective materials and opulent, streamlined shapes,” says Jennifer. So, when charged with designing this new build, it’s no surprise she gravitated to emphasizing symmetry and curves in her design, creating a

home highly evocative of the golden age of film.

On the open main floor, Jennifer conjured the silver screen with contrasting black and white furnishings, adding layers of grey, such as misty diaphanous drapes and swirling marble veined tabletops. Cinematic lighting was also a priority, and Jennifer’s choices – a pair of Art Deco style wall sconces and a glitzy-industrial chandelier to name just two – both illuminate and accentuate the home’s open spaces.

Even though the homeowners, who are young professionals with two kids, aren’t old movie buffs, they love it. “From the beginning, they were so open to the possibility of pairing everyday practicality with the elegance of another era,” says Jennifer. Now, that’s a happy ending worthy of the big screen.

“IN AN OPEN-CONCEPT HOME, EVERYTHING SHOWS AT ONCE, SO CHOOSE FURNITURE THAT LOOKS COMPELLING FROM EVERY ANGLE.”



“WE STARTED WITH MODERN FURNISHINGS, AND THEN INJECTED OLD HOLLYWOOD DRAMA IN THE FORM OF HIGHLY POLISHED SURFACES, LUXE FABRICS AND A CINEMATIC COLOUR SCHEME.”

— TREND —
GRAPHIC POTTERY

TIMELESS TRENDS

This glamorous home designed by Jennifer Backstein incorporates design directions that are very *au courant*, but worth investing in, as they'll stand the test of time.

Shapely Shapes

Jennifer pulled from Art Deco and Art Nouveau influences seen in classic Hollywood films. Those curvaceous yet streamlined shapes feel fresh after many years of squared-off clean-lined design.

Colour & Texture

Jennifer's choice of green velvet sofa is pure Hollywood glam, and also so of the moment. Great fabrics like bouclé, chenille and velvet are hot; and powerhouse colours are welcome new design directions.

Swivel Club Chairs

The round-back club in the family room has classic good looks, but also exemplifies a return to swivel accent chairs.

As classic as black and white movies, this curvy 1930s-style table with its in-lay striping pairs handsomely with the tuxedo palette of a high-gloss stool. A black-frame mirror reflects a vignette of sleek vases with couture lines.

Floating bubbles of illuminated glass dangle from a brass ceiling plate. The porcelain tabletop features dramatic grey veining. Swank brass dining chairs have patterned bouclé backs and luxe black chenille seats.





**“GORGEOUS BRASS
DETAILS IMPART
LUXURY TO A
TIMELESS GREY,
NAVY AND WHITE
PALETTE.”**



OPPOSITE Open to the family room, the kitchen features the symmetry of glinting glass-and-brass ceiling pendants and a grand six-by-10-foot island. Its marble-style porcelain top reflects the exquisite panelled ceiling above. An opulent oversized custom range hood fitted with brass strappings is flanked by 1930s-style sconces.

ABOVE A roman shade brings subtle pattern to the sink area. Note how the vase reinforces the palette and pattern.

RIGHT The round kitchen table features a stained-grey pedestal base and a wooden top with a starburst design. Curved chairs tuck easily in place. Their vinyl seats make for quick clean-up. A trapeze-style polished brass light fixture hints at Hollywood glamour and draws the gaze upward, accentuating the high ceilings.

PENDANTS, RH. SCONCES, ELTE. LIGHTING (OVER TABLE), Ralph Lauren. **ROUND TABLE,** custom collaboration between JBI, Carrocel Interiors and Accurate Woodwork. **COUNTERTOPS,** Marble Trend. **HARDWARE,** Vesta Hardware. **ISLAND PAINT,** Naval, Sherwin-Williams.







“This is where everyone hangs out,” says Jennifer, speaking about the family room; that’s why the designer focused on function as well as luxury. The ottoman is wipe-able leather, but is dressed up with brass; the built-in media millwork is stately, but includes cabinetry for hidden storage; and the rug looks swish, but is cut from carpeting. As well, the pillows are made from affordable fabric. “To make a playful splash, classic hot pink accents were placed amid the navy velvet sectional, brass picture lights, and marble fireplace.”

SECTIONAL SOFA, PICTURE LIGHTS, Elte. RUG, Fiber and Cloth. FIREPLACE SURROUND, Marble Trend. SMALL COCKTAIL TABLE, West Elm. Custom DRAPERY, OTTOMAN, PILLOWS, SWIVEL CHAIR, JBI. DRAPERY FABRIC, Billbrough.

— TREND —
SWIVEL CHAIR



— TREND —
STYLISH HOME
OFFICE

ABOVE The custom 10-foot desk finished in grey stain has a secret – all the tech wiring is hidden inside to keep the surface clear. The millwork, painted grey, hides office clutter and is suitably set with framed portraits of Hollywood stars, including Lauren Bacall.

DESK, collaboration between JBI, Carrocel Interiors and Accurate Woodwork. **MILLWORK PAINT**, Web Gray, Sherwin-Williams. **DESK LAMP**, Latitude Run.

RIGHT Situated on its own private floor, the office features a speakeasy palette of deep hunter greens, warm greys and ritzy metallic tones. Even the wallpaper’s Art Deco pattern shimmers. “The look is definitely very Hollywood,” says Jennifer. “It’s glam, but comfortable.” The glass coffee table reflects light from a stacked-globe floor lamp. A brass filigree end table is set with a trio of sleek vases of varying heights.

SOFA, Rove Concepts. **COFFEE TABLE**, West Elm. **ANTONIA VELLA DECO SPEAKEASY WALLPAPER**, Metro Wall-Coverings. **FLOOR LAMP**, Braydon Studio. **BRASS END TABLE**, Article. **VASES**, Elte.



“TO CREATE AN OLD HOLLYWOOD LOOK FOR TWO YOUNG PROFESSIONALS, WE BLENDED RICH SPEAKEASY TEXTURES WITH CLEAN MODERN LINES.”

— TREND —
GLAMOROUS
WALLPAPER





ABOVE The master bathroom offers the luxury of real marble underfoot and a curvaceous soaking tub. The shower floor is laid in a dapper chevron design and the round stool beneath the pearl-grey vanity is leading-lady perfect. Custom hardware, a high-gloss countertop and polished nickel lighting ensure all-day gleam and ambience.

MARBLE, Granite Depot. **SHOWER FLOOR**, Stone Tile. **SCONCES**, Elte. **VANITY STOOL**, Global Views.





— TREND —
FACE
LINE ART

“ELEGANCE IS IN THE DETAILS. THE BEDROOM DRAPES ARE AN AIRY GAUZE WITH A SHIMMERING SILVER METALLIC THREAD THROUGH THEM.”

ABOVE & OPPOSITE, BOTTOM “The softness of layered grey tones and occasional emerald green motifs give this room a look that’s rich yet relaxing,” says Jennifer. In the bay window, a pair of slipper chairs brings symmetry; the undulating pattern of the throw pillows offer a contrast to the romantic, oversize night tables. A starburst chandelier is a bright spot day or night.

HEADBOARD, RH. BEDSIDE TABLES, Bernhardt. **RUG,** Elte Mkt. **SCONCES,** Elte. **BENCH, SLIPPER CHAIRS, PILLOWS** (chair and bed), **DRAPERY,** JBI. **CHANDELIER,** Y Lighting. **FABRIC** (chair pillows), Lee Joffa. **FABRIC** (bed pillows), Billbrough. **FABRIC** (drapery), Kravet. **ART,** East Urban Home. **MIRRORS,** Three Posts.

FOR SOURCES, SEE OUR
WORKBOOK

TEXT KATIE HAYDEN
PHOTOGRAPHY PATRICK BILLER

A Fine Vintage

In her young family's renovated Grimsby, Ont., home, designer Lindsay Mens Craig proves that elegant traditional spaces can also be fresh, cozy and inviting.

Having to rebuild much of the house allowed designer Lindsay Mens Craig to introduce classic old-world details like beadboard wall panelling, which is handsomely set off by a regal antique gilt-framed mirror. A bar cart always affords a great opportunity to add layers to a room. This one in the kitchen is highly appropriate; Lindsay's husband, Michael Craig, works in the liquor industry.

DESIGN, Lindsay Mens Craig, TOM Interior Design. **BAR-CART**, Mrs. Greens Antiques. **MIRROR**, Vintage Fine Objects. **WALL PAINT**, Moonshine 2140-60, Benjamin Moore.



G

Three years ago, designer Lindsay Mens Craig and her family moved from Toronto to Grimsby, Ont., “in search of a quieter, more settled life – a bit more balance and peace,” says Lindsay. They snapped up a 100-year-old home at the base of the Niagara Escarpment – a stone’s throw from picturesque orchards and vineyards – for a song and planned a quick cosmetic makeover. But when work started, they discovered they’d “literally bought the worst house in the entire world,” Lindsay says. “In the 16 years I’ve been doing this, I’ve never seen anything like it.” →

BELOW The black stair rail helps balance the adjacent dark living room (see next page). The grey trim feels plucked from an elegant colonial home in Connecticut, while a gallery wall of family photos strikes a more contemporary tone. When hanging art, Lindsay advises balancing tones, textures, colours and finishes. “I try to fill the space with things I either

love, that are functional, or have meaning. I also love mixing contemporary accessories with antiques – I think that’s a necessity to make it look complete and less predictable, less store-bought.”

CHAIR, Vintage Fine Objects. **Chair FABRIC**, Lee Jofa. **ARTWORK**, Tony Koukos Photography. **RUG**, Crate and Barrel. **STAIR RUNNER**, Allan Rug.



ABOVE A corner in the front hall epitomizes two of Lindsay’s guiding design principles: mixing eras, and playing black and white off each other. “I love to infuse traditional elements like antiques and vintage pieces in all my projects,” she says. “It gives a home layers and

coziness and an eclectic vibe.” In the vestibule through the doorway, a checkerboard floor and Cole & Son’s Nuvolette wallpaper feel bold and graphic.

DRESSER, BOWL (with handles), Vintage Fine Objects. **WALLPAPER**, Cole & Son. **URN** by Samantha Pynn, HomeSense.

“It’s magical here in Grimsby. I find it soothing and calming and beautiful.”



For the next 10 months, Lindsay, husband Michael Craig, and daughters Kennedy, 7, and Cameron, 4, lived in a rental while she focused on rebuilding the home from its sinking foundation to its new peaked roof, adding 500 square feet along the way. There was a silver lining to the unexpected gut job. “Starting from scratch meant I could redesign with our needs in mind,” Lindsay says. “I got to tinker more than in our previous houses.” →



The formal living room is at the front of the house and also functions as Michael’s home office. When he said he wanted a dark office, Lindsay realized this would be the perfect place to feature the huge moody cloud prints that she has always loved, which are by her photographer friend Tony Koukos. She then wrapped the space - walls, built-ins, fireplace and all - in the enigmatic Hague Blue by Farrow & Ball. “It’s peacock in some lights, navy in others,”

Lindsay says. Upholstered seating and a rug in soft off-white hues play important roles: “You need light pieces to bring some airiness to a room and help it from feeling overwhelming,” says Lindsay. Like the rest of the house, this room is artfully accessorized, and Lindsay’s directive for achieving a look like this is simple: “You get that layered look by going to antique markets, auctions, second-hand stores and consignment stores, and buying what you love,” she advises.

The room has the feel of a traditional English study, which is an excellent way to integrate a home office into an existing living room.

SOFA, WING CHAIRS, OTTOMAN, Sarah Richardson Design. **LANTERN PENDANT, MIRROR, LAMP**, Stoney Creek Furniture. **URN** (on mantel), Ebay. **LIBRARY LIGHT** (on built-in), **TRAY**, Elte. **ARTWORK** (over stools) by Tony Koukos. **DRAPES, CUSHIONS** (on sofa), Myra Scott Textiles. **VASE**, Vintage Fine Objects. **WALL PAINT**, Hague Blue 30, Farrow & Ball.



— TREND —
DARK,
SOOTHING
COLOURS



— TREND —
CURVACEOUS
FURNITURE

LEFT & OPPOSITE A tonal antidote to the inky formal living room, the bright, cozy sunken family room doubles as Lindsay's home office. "In my office, I need the natural light to look at samples and paint colours," she says. Yacht prints and brass pendant lights from Morocco feel worldly and fun, and a gas fireplace amps up the warmth, literally and figuratively. Classical elements like the urn-shaped table lamps and symmetrical pairings of tables, chairs and built-ins lay the traditional foundation for the look. One of the matching glass-front built-ins stores Lindsay's work and office supplies; the other holds the girls' craft supplies.

Lindsay's office, much like the kitchen, is a hub, with a doorway on the left leading to the kids' sunroom, an opening to the hallway (in the background), for access to a powder room and laundry area, and on the right, a step up to the kitchen.

Moroccan **PENDANT LIGHTS**, The Door Store. **CHAISE**, Elle & Eve. **ARTWORK**, Celadon. **DESK**, Bettencourt Manor. **LOVE SEAT, DESK CHAIR**, Sarah Richardson Design. **LAMP** (on desk), **MIRROR** (left of desk), Vintage Fine Objects. **ARTWORK** (over fire), **COFFEE TABLES**, Elgin Picture & Frame. **GLASS-FRONT CABINETS**, IKEA. Grey **WALL PAINT**, Cornforth White, Farrow & Ball.



Today, an enchanting collection of antique and vintage furniture and *objets* – from regal dark-wood dressers to classical urns and gilt-framed mirrors – give the house a distinctly traditional presence, while contemporary finishes, like liberal doses of black and simple modern art, make it feel fresh and welcoming. "Too many antique and vintage pieces without enough modern to juxtapose them will make a house feel stuffy and old," Lindsay says. Similarly, to make the moody blue living room work with the rest of the bright house, she purposefully wove dark elements throughout the home. The net result isn't lost on Lindsay, who says, "I took the ugliest house in Grimsby and made it very beautiful. It feels warm and relaxed and cozy. And it functions really well as a family home." She's finally found the peace and quiet promised by life in a small town.



“I like dark and light, the hit of vintage and antique, a little bit of modern, and a bit of a feminine touch – plus elements of what’s current, but done in a timeless way.”



OPPOSITE, BOTTOM Lindsay Mens Craig is a founding partner in the new Toronto-based interior design firm TOM, along with fellow Sarah Richardson Design alums Tommy Smythe and Kate Stuart. Lindsay traces her passion for traditional design to growing up among handsome century homes in Grimsby, Ont., and says working with Sarah Richardson and

Tommy Smythe for the past 16 years further fostered that love. “Tommy and I have spent a lot of time in Connecticut and Charleston, S.C., over the past decade, so we’ve been submerged in old, beautiful character homes,” she says.

CHAIR, Crate and Barrel. **DRAPES**, Lee Jofa. **CARPETING**, Allen Rug. **COFFEE TABLE**, Elgin Picture & Frame.



— TREND —
SCONCES IN
KITCHENS

ABOVE & RIGHT The totally overhauled kitchen is the heart of the home layout-wise and living-wise. “It’s really that hub of the house where we hang out after school and on Saturday mornings. And when we entertain, everybody ends up in here,” Lindsay says. “I don’t cook a lot, but I wanted the island where the kids could sit and do their crafting, and we can eat.” The jumping-off point was the hand-formed glazed ceramic tile, which was inspired by tile she had spotted at Roman and Williams’ RWGuild restaurant in New York a few years ago. Lindsay covered a feature wall behind the stove with it, then added display shelves for art

and *objets*, handsome sconces and an understated vent hood so the tile could play the lead. A marble cutting board looks luxe and protects the Statuario marble countertops from getting dinged or stained. New engineered medium-stained white oak flooring was installed throughout the house.

BACKSPLASH TILE, Clé tile. **CABINETRY, STOVE, SINK**, IKEA. **FAUCET**, The Rubinet Faucet Company. **COUNTERTOPS**, World Stone. **SCONCES** (behind stove), The Vintage Lighting Shop. **BARSTOOLS**, Sarah Richardson Design. **PENDANT LIGHTS**, round **CABINETRY AND CUP PULLS**, The Door Store. **RUG** (by stove), vintage from Charleston. **ARTWORK** (on shelf behind stove), Vintage Fine Objects.



BELOW The dining room was originally in its own room. “I just thought, I’ll never use that!” Lindsay says. “So we took the wall down and opened it right up.” She brought comfort and elegance to the dining area by swapping out chairs on one side for a sofa (with a nice high seat) bookended by handsome brass-and-glass end tables. “I don’t love formal dining spaces, which is why we have the bench in the eating area,” admits Lindsay. Those prettier pieces are offset by the clean lines and dark tones of the extendable decagonal dining table and mod Windsor chairs.

CHANDELIER, Residential Lighting. **SOFA**, Sarah Richardson Design. **END TABLES**, Tonic Living. **CHAIRS**, Muskoka Living. **ARTWORK**, Tony Koukos Photography. **RUG**, Crate and Barrel.

RIGHT The main-floor powder room was rejigged to accommodate a laundry closet in the same hallway off the kitchen. Lindsay found the vanity – a small Swedish side table – first, and planned the rest of the room around it, bringing in geometric cube-patterned tile, an opulent Venetian mirror and delicate trellis wallpaper. “I went with a more modern floor tile to balance the traditional lines of the vanity,” she says.

VANITY, Vintage Fine Objects. **Geometric-patterned FLOOR TILE**, Saltillo Tile. **WALLPAPER**, Sarah Richardson Design.



UNEXPECTED TRENDS

Lindsay’s house doesn’t scream, “Trends!” But hidden within the handsome traditional spaces are clever ideas and contemporary flourishes that make these spaces fresh.

Separate Spaces

The Covid-19 pandemic has forced us to reconsider open-concept living, and we’ve discovered that it’s desirable to have separate spaces in our homes. Says Lindsay: “This house is great for privacy. Mike can close himself into the formal living room to work, I have my office, and there are different zones for the kids and for entertaining.”

Artisanal Tiles

The textural and mottled tiles on the kitchen’s feature wall bring a softness and hand-crafted beauty to the space. For Lindsay, they inspired the room: “I spotted them in New York at a restaurant several years ago and they were the first thing I had to start the kitchen design.”

Black

Lindsay has always been ahead of the curve when it comes to black, which more and more of us are now willing to try. “I love dark accents. My mother always had black accents in our home when I grew up. We had a black bathroom! And I love that tension of the dark with the light.”



OPPOSITE AND

BELOW As part of her design process, Lindsay carefully balances light and dark, and old and new. “In terms of the bedroom, I had the traditional shape of the headboard – which Tommy actually designed for a client we had a couple of years ago – and I also had a vintage lamp and a vintage bedside table that I found on the side of the road, so I thought, I have these vintage pieces – let’s get some modern art [over the bed] and the striped bedding here as that juxtaposition, that tension,” she says. “And the roman blind fabric is more modern, so it balances out the Persian rug on the

floor.” Similarly, dark elements like the bedside table help anchor the predominantly pale space and make it sing. The bedroom also quietly celebrates Lindsay’s grandmother’s love of birds. A framed embroidered bird behind the wing chair was made by her grandmother, and Lindsay riffed on that by choosing a bird motif fabric for the throw pillow on the bed.

DUVET COVER, Pottery Barn. **HEADBOARD**, Sarah Richardson Design. **LAMP, TABLE** (under window), Vintage Fine Objects. **ARTWORK** (over bed), Art Interiors. **BLIND FABRIC, PINK CUSHION**, Kravet. **WALL PAINT**, Ammonite; **TRIM PAINT**, Pavilion Gray, Farrow & Ball. **DRAPES**, Tonic Living.



ABOVE Luxe details like a neoclassical mirror, black vanity, framed artwork and brass fixtures give the ensuite bathroom polish. The room, plus a walk-in closet, were carved out of the original master bedroom, which was 24-feet long.

VANITY, Mike Black. Carrara Marble **COUNTERTOP**, World Stone. **MIRROR**, Decorum Decorative Finds. **FAUCET, SHOWERHEAD, FIXTURES**, The Rubinet Faucet Company. **SUBWAY TILE**, Saltillo Tile.

A pink ceiling is a fun and fresh alternative to white.

— TREND —
COLOURED
CEILINGS



ABOVE & RIGHT While Kennedy's room is elegant and well-appointed – from the lush wallpaper dripping with blooms to the artful lighting and marble-topped side table – elements like the cozy reading nook (previously an awkward, unused space over the staircase), baskets full of favourite stuffed animals and personalized art make it endlessly appealing to the younger set, too.

WALLPAPER, Sarah Richardson Design. **PILLOWS** (in nook) by Samantha Pynn, **BEDSHEETS**, HomeSense. **LAMP, PINK THROW**, IKEA. Shaggy **CUSHION**, Pottery Barn Kids. **ARTWORK** (in nook), Vintage Fine Objects. **HEADBOARD**, Windsor House Furniture. **RUG**, Wayfair.



— TREND —
HANGING
CHAIR



ABOVE At first glance, the kids' bathroom looks simply clean and white; a second glance reveals layers of chic detail: a basketweave-patterned tile in the shower, sleek marble subway tile underfoot, and a host of gently rounded chrome accents like the rain showerhead, vintage-look mirror and gooseneck faucets. A ruffle-edged glass pendant light and potted

orchid inject a whisper of femininity. A double vanity gives each girl her own sink - "though they still manage to fight over which sink they want!" Lindsay says.

VANITY, Mike Black. **TUB**, Taps Bath. **STOOL**, Vintage Fine Objects. **SHOWER WALL TILE, FLOOR TILE**, Saltillo Tile. **MIRROR**, RH. **PENDANT LIGHT**, The Door Store. **SHOWER HEAD**, The Rubinet Faucet Company.

ABOVE & RIGHT Four-year-old Cameron's bedroom feels elegant but also fun. Lindsay added a hit of period-friendly architectural detail by dividing up the walls with a chair rail, then hanging playful wallpaper below and painting the walls above. A 1970s-era rattan swing chair is a light-hearted note, and layers of woven textures introduce a tactility that makes the room especially inviting and livable for a small child.

HANGING CHAIR, Smash Salvage. **WALLPAPER, HEADBOARD**, Sarah Richardson Design. **DRAPES, CUSHIONS**, Kravet. **BEDDING, POUF**, HomeSense. **BEDSIDE TABLES**, Vintage Fine Objects. **TABLE LAMPS**, Michael Penny. **BLUE QUILT**, Pottery Barn Kids. **ARTWORK**, Kathy Richardson Photography.



EYE ON THE

prize

Seeing the possibilities helps a Montreal-area realtor revamp her mid-century ranch for modern family life.

TEXT EMMANUELLE MOZAYAN-VERSCHAEVE AND KATHLEEN DORE | PHOTOGRAPHY DREW HADLEY | STYLING CAROLINA AUZ

— TREND —
LEATHER
IN WARM
TONES





Who better than a realtor to see the potential of a property? “The house had been for sale for eight months when I decided to visit,” says its present owner, a real estate agent, about her 1950s ranch bungalow on Montreal’s South Shore. The previous owners had lived there for 60 years; it was pristine, but dated. “They had maintained it perfectly, had put all their love into it,” she says. “Everything was spotless, but nothing had ever been changed. It was a bit like a museum.” But her expert eye immediately saw the possibilities: “In my work, I often see how people have difficulty imagining what a place could become once renovated. I see it right away.” One look and she knew she could give it new life as a bright, modern home for herself and her four-year-old daughter.

Although the owner didn’t change the footprint of the 2,350-square-foot house, she completely reimagined how to use the space, switching up rooms to better reflect a modern lifestyle. A family room became a welcoming new kitchen; the former dining room became a family room; the old kitchen was turned into a bathroom; and one small bedroom became an office while another was transformed into a luxurious master bath. It was a sophisticated and complicated rethinking that resulted in a transformative improvement of flow between spaces. →

BELOW & OPPOSITE A brass-trimmed floor mirror floods the entryway with reflected light and offers a spot for last-minute outfit checks before heading out; oversized brass hooks are handy and signal the intro of this golden touch that will appear throughout. A large console stores outerwear and, because it is also a part of the living room, serves as bar storage. Locally made, it combines mid-century-inspired lines with a contemporary base. Above it, a shapely modern abstract is a focal point.

Mobican **SIDEBBOARD** and **TABLE**, Maison Corbeil. **HOOKS**, IKEA. **MIRROR**, Must Société. **RUG**, Simons.





That cohesion was reinforced by the owner's natural talent for design, and she let her love of modern and mid-century lead the way. "I like this '50s style of house, where everything is on one floor," she says. She also preserved certain favourite original elements like the terrazzo floor in her office. Elsewhere, she opted for light-toned maple floors and shopped locally as much as possible. "I like natural materials, quality objects and I prefer local made-in-Quebec products," she says.

The newly bright, open and modern spaces maximize comfort for her and her little girl, just as she'd originally envisioned. It's a world away from what she had first encountered, but like the previous owners, she put all her love into it, and it shows.

**TWO 1930S-STYLE LEATHER ARMCHAIRS
AND A CARAMEL COLOUR SOFA BRING WARMTH TO
THE MOSTLY TWO-TONE PALETTE.**





LEFT & BELOW The reno included switching the location of the dining room to be part of the living room, allowing the owner use its former space as a family room (see page 88). “I fell in love with the table with its wood and brushed steel legs in ebony,” she says. “I find the rectangular shape lends itself well to the space.” The chairs are comfortable, practical and repeat the use of black as an

accent. The striking original artwork was a birthday gift and adds subtle colour and beauty to the space, creating a wonderful conversation piece at dinner parties. The brass chandelier and shelving unit link the space to the rest of the home.

TABLE, CHAIRS, CHANDELIER, SHELVES, Maison Corbeil. **PAINTING,** Nathalie Poirier.

A MODERN CHANDELIER LINKS TO THE LIVING ROOM SCONCES AND IS LIKE A CONTEMPORARY WORK OF ART.

OPPOSITE The homeowner loves a modern look, but embraced select original features of the home, such as the fireplace. “I added the ceramic tiles [on the hearth], then stripped the wall to expose the brick and painted it and the fireplace mantel white,” she says. Her love of the seaside inspired subtle references in elements like brass sconces, the port-hole effect of the round mirror, and the intro of sandy tones in the drapery and poufs. She chose glass-topped tables that wouldn’t obscure the view of flames in the fireplace.

SOFA, COFFEE TABLE, ARM-CHAIRS, Must Société. **RUG,** Costco. **CURTAINS,** Bouclair. Umbra **MIRROR, SCONCES,** Wayfair. **CUSHIONS,** Simons and HomeSense.





— TREND —
MOODY
BLUES

The former residents had added two extensions onto the house in the 1990s, including a family room that the new owner transformed into a stunning kitchen. The blue-grey Shaker-style cabinets evoke a seaside palette and the brass hardware and accents are reminiscent of a yacht's cabin. Thick wood shelves bring warmth to the mostly white room. The quartz countertop and

backsplash give a modern touch, while black barstool legs and pendant lights add punch and reinforce the connection between rooms.

CABINET MAKER, Bélanger & Fils. Quartz **COUNTERTOPS** and **BACK-SPLASH**, Granitaly. **SINK**, Costco. **FAUCETS**, Delta. Electrolux **REFRIGERATOR** and Bertazzoni **STOVE**, JC Perreault. Wall **SCONCES** and **PENDANTS**, Wayfair. **BARSTOOLS**, Must Société. **ACCESSORIES**, HomeSense.

THE FIREPLACE AND LARGE ISLAND MAKE THE KITCHEN A DESTINATION.



BELOW Lots of cushions and cozy throws make the sofa – which has an unusual shape – a sink-into destination in the new family room. “It has an angle, and its configuration was well suited to the room,” says the owner. “I think a sectional would have been too bulky.” Sunny yellow accents warm the room visually and work well with the yellowy brass shade of the floor lamp, which acts as a great reading light and creates a soothing mood when the homeowner and her four-year-old daughter snuggle on the sofa while watching TV. The frosted doors of the TV cabinet provide a place to stow books, blankets and “whatever you don’t want to see,” says the owner.

SOFA, COFFEE TABLE, FLOOR LAMP, Maison Corbeil. **BASE CABINET,** All Modern. **CURTAINS,** Bouclair. **RUG,** Costco. **CUSHIONS AND THROWS,** Simons and HomeSense.

RIGHT Even pre-pandemic, the homeowner worked from home a significant portion of the time, so she transformed a room that had been a bedroom into a highly functional and attractive office. She opted for mostly all-white practical furniture, but brought in a black desk chair to forge a connection to other rooms and to the stunning terrazzo floor, which is original to the house and, coincidentally, is also a hot trend. When clients visit, she pulls in chairs from the dining room. “They have armrests and are enveloping, a bit like armchairs,” she says.

DESK, OFFICE CHAIR, Structube. **Black CHAIR, STORAGE FURNITURE,** Maison Corbeil.

YELLOW ACCENTS WARM THE ROOM VISUALLY AND WORK WELL WITH THE YELLOWY BRASS SHADE OF THE FLOOR LAMP.

— TREND —
ADDING WARM COLOURS TO GREY



— TREND —
TERRAZZO



LIGHT FLOODS INTO THE HOME OFFICE WHERE THE FURNISHINGS ARE RESTRAINED, LETTING THE TERRAZZO FLOOR TAKE CENTRE STAGE.





ABOVE In the master bedroom, a whole section of wall is devoted to storage. Drawers, shelves and wardrobes are concealed by two sliding doors; one is white, while the other is mirrored to make the room appear bigger. A black bench balances the upholstered headboard, and bedding in white and shades of grey give a tailored feel. Natural woven elements add textural interest, and a touch of warm-toned

wood is welcome with the addition of new nightstands from a local source. "I particularly like this material because it makes the atmosphere warm," says the owner. Gold accents were introduced in small doses with the bedside sconces.

Mobican bedside **TABLES**, Maison Corbeil. **BENCH**, Bouclair. Cabinet **DOORS** and **BEDDING**, IKEA. Grey **BLANKET**, Costco. **BASKETS**, Simons and Must Société. **SCONCES**, Déco Luminaire.



FOR SOURCES, SEE OUR WORKBOOK



LEFT & BELOW The owner turned an extra bedroom into a master bath, leaving the plan open, except for a closed area for the toilet (behind the black door). Black faucets and fittings reflect her inclination toward current trends, as do the clean lines of the sinks and the bathtub. “The bathtub doesn’t take up too much space, but is deep,” says the owner. “Baths are often showcased in bathrooms. I preferred to put the emphasis on the glass cabinet, because it has a lot of character and it breaks the modern style.”

SINKS, VANITY with marble countertop, **WALL SCONCES**, Wayfair. **MIRROR**, Bath Depot. **BATHTUB, SHOWER, SHOWER DOOR AND FAUCET**, Jean Lépine Plumbing Centre. **FLOOR AND SHOWER CERAMICS**, Planchers Lanctôt. **CABINET**, Maison Corbeil.

ROUNDED SHAPES IN THE MASTER BATH – THE SINKS, SCONCES AND TUB – SOFTEN THE MOOD.



The Good Fats

Nutritionist and chef Lee Capatina is passionate about good food, good fat and good business. Her Toronto-based company promotes organic farming and donates 10 per cent of its profits to saving Asian elephants. These recipes from her cookbook, *Eat Good Fat*, focus on using fat in a healthy way with recipes that will leave your tastebuds and your tummy happy.

RECIPES LEE CAPATINA | **PHOTOGRAPHY** LAUREN MILLER
FOOD STYLING DARA SUTIN | **PROP STYLING** RAYNA MARLEE SCHWARTZ



BUCKWHEAT CHIA PUDDING WITH ALMOND BUTTER DRIZZLE

SERVES 2

- ½ cup + 1 tbsp raw buckwheat groats
- 1½ cups unsweetened almond milk
- 1 banana
- 1 tbsp chia seeds
- 1 tbsp flax seeds
- 1 tbsp cacao powder (optional)
- 1 tbsp pure maple syrup
- Pinch of sea salt

To Serve

- Raw cacao nibs
- Fresh strawberries, chopped
- Natural almond butter, to drizzle

Heat a dry, large skillet over medium-high heat. Add the buckwheat groats in a single layer. Toast, tossing occasionally, until fragrant and lightly browned, 5 to 6 minutes.

Transfer the toasted buckwheat to a high-speed blender or food processor, reserving 1 tablespoon to top the pudding. Add the almond milk, banana, chia seeds, flax seeds, cacao powder (if using), maple syrup and salt. Blend until smooth, 15 to 20 seconds.

Pour the mixture into 2 small serving dishes. Cover and refrigerate overnight (the mixture will thicken as it sets). In the morning, serve topped with the reserved toasted buckwheat, cacao nibs, and strawberries. Drizzle with almond butter.

WHIPPED FETA SPREAD

MAKES 1 CUP

Whipped Feta

- 4 oz sheep's or goat's milk feta cheese
- ½ cup canned full-fat coconut milk, more as needed
- 1 tsp fresh lemon juice

Crostini, to serve

Savoury Toppings

- 2 heirloom tomatoes, sliced
- Flaky sea salt, to taste

Sweet Toppings

- ½ cup chopped pistachios
- 1 tbsp raw liquid honey

In a food processor or a high-speed blender, combine the feta cheese, coconut milk and lemon juice. Process until smooth, 25 to 30 seconds. Add more coconut milk, as needed, to thin the mixture to your desired consistency.

Transfer to a serving bowl and top with the savoury or sweet toppings, as desired. Serve with crostini. Store leftover spread in an airtight container in the fridge for up to 1 week.



WHIPPED FETA SPREAD



SALTED CHOCOLATE HALVA FUDGE WITH TAHINI DRIZZLE

SALTED CHOCOLATE HALVA FUDGE WITH TAHINI DRIZZLE

MAKES 16 SQUARES

- $\frac{3}{4}$ cup ghee*
- $\frac{3}{4}$ cup coconut butter or virgin coconut oil
- $\frac{3}{4}$ cup tahini, more to serve
- $\frac{3}{4}$ cup raw cacao powder
- $\frac{1}{4}$ cup pure maple syrup
- $\frac{1}{2}$ tsp sea salt
- 2 tbsp sesame seeds
- Flaky sea salt, to serve (optional)

In a small saucepan over low heat, melt the ghee and coconut butter. Remove from the heat. Add the tahini, cacao powder, maple syrup and salt. Whisk to combine.

Transfer the mixture to a glass 8-inch square baking dish. Cover and place in the freezer for at least 2 hours.

Remove from the freezer and let sit for 10 minutes at room temperature to soften.

Meanwhile, heat a dry, medium skillet over medium heat. Add the sesame seeds in a single layer. Toast, tossing occasionally, until the sesame seeds are fragrant and lightly browned, 4 to 5 minutes.

To serve, slice the fudge into 16 squares. Drizzle with tahini. Sprinkle with toasted sesame seeds and flaky sea salt, if using. Enjoy immediately. Store the fudge in an airtight container in the freezer for up to 1 month.

** Ghee has a wonderfully buttery flavour, and the high smoke point makes it super versatile. Traditionally used in Indian cooking, ghee is now widely embraced as a healthier butter replacement for baking, as well as adding to lattes and using as a spread.*



Find more delicious fat-friendly recipes in *Eat Good Fat* (Penguin Random House, \$35).

Put more style
into your home
all year long
with *Style at Home*

Subscribe today
and **save**
up to **56%**
off the newsstand cover price.



subscription@tva.ca

SOURCE GUIDE

Where to find the products featured on our pages.

3 FAB Metal Manufacturing Ltd.
3fab.ca

A
Accurate Woodwork & Design
416-705-2595

Aesop
aesop.com

Agence Aura
agenceaura.com

All Modern
allmodern.com

Allan Rug Company Ltd.
allanrug.com

Art Interiors
artinteriors.ca

Arteriors Inspired Furnishings
arteriorshome.com

Article
article.com

B
Bath Depot
bathdepot.ca

Baril Design
barildesign.com

BD Barcelona Design
bdbarcelona.com

Belanger & Fils Construction Inc.
constructionbelanger.com

Benjamin Moore & Co.
benjaminmoore.ca

Bernhardt Interiors
bernhardt.com

Bertazzoni Canada
ca.bertazzoni.com

Best Buy Canada
bestbuy.ca

Bettencourt Manor
bettencourtmanor.com

Bilbrough & Co.
bilbroughs.com

BoConcept
boconcept.com

Bouclair
bouclair.com

C
Carrocel Interiors
carrocel.com

CB2
cb2.ca

cc-tapis
cc-tapis.com

CF Interiors Furnishings and Design
cfinteriors.ca

Circa Lighting
circalighting.com

Clé tile
cletile.com

Cole and Son (Wallpapers) Ltd.
cole-and-son.com

Costco Canada
costco.ca

Crate and Barrel
crateandbarrel.ca

Cricklewood Interiors
cricklewoodinteriors.com

Currey and Company Lighting
curreyandcompany.com

D
Deco Luminaire
decoluminaire.com

Decorum Decorative Finds
ddfhome.net

Delta Faucet
deltafaucet.ca

Designer's Choice Kitchen & Bath
designerschoicecanada.com

Divine Flooring
divinefloor.com

E
Ebay
ebay.ca

Electrolux
electroluxappliances.ca

Elgin Picture & Frame
elginpictureandframe.com

Elle & Eve
elleandeve.ca

Elte
elte.com

Emtek
emtek.com

Ennora
ennora.com

EQ3 Modern Furniture
eq3.com

Ethan Allen
ethanallen.ca

Etsy
etsy.com

F
Farrow & Ball
farrow-ball.com

Ferm Living
fermliving.com

Fort Architecture
fortarchitecture.com

Friendly Fires
friendlyfires.ca

G
Global Views
globalviews.com

Granitaly
granitaly.ca

Gresham House Furniture
greshamhousefurniture.com

H
HanStone
hanstone.ca

Home Depot
homedepot.ca

HomeSense
homesense.ca

Hudson Valley Lighting
hudsonvalleylighting.hvlgroup.com

I
IKEA
ikea.ca

J
JC Perreault
jcperreault.com

Jean Lepine Plumbing Centre
plomberiejeanlepine.com

Jennifer Backstein Interiors, JBI
jenniferbacksteininteriors.com

Juniper Print Shop
juniperprintshop.com

K
Kingston Brass
kingstonbrass.com

Kit Interior Objects
kitinteriorobjects.com

Kohler
kohler.ca

Kravet
kravet.com

L

La Tuilerie
latuilerie.com

LG
lg.com

Lindsay Mens Craig
thisistom.ca

Lowes
lowes.ca

M

Maison Corbeil
maisoncorbeil.com

Marble Granite Depot
marblegranitedepot.com

Marble Trend Ltd.
marbletrend.com

Metro Wallcoverings
metrowallcoverings.com

Mobilia
mobilia.ca

Mrs. Greens Antiques
greenantiques.ca

Muskoka Living Interiors
muskokaliving.com

MUST Société
mustsociete.com

Myoh Canada
myoh.ca

Myra Scott Textiles
myrascott.com

N

Niche Decor
nichedecor.com

P

Peridot
shoppebyperidot.com

Planchers Lanctot
lanctotcsd.com

Pottery Barn
potterybarn.ca

Pottery Barn Kids
potterybarnkids.ca

R

Ralph Lauren
ralphlauren.com

Rawlyk Developments Inc.
rawlyk.com

Recreation World Home
rec-world.com

Rejuvenation Lighting
rejuvenation.com

Residential Lighting
residentiallightingstudio.com

RH Baby & Child
rhhbabyandchild.com

Richelieu Lighting and Accessories
richelieu.com

Robinson Lighting & Bath
robinsonco.ca

Rona
rona.ca

Rose Bonbon
rosebonbon.ca

Rove Concepts Design Furniture
roveconcepts.com

Rug & Weave
rugandweave.com

S

Saltillo Tile
saltillo-tiles.com

Sarah Richardson Design
sarahrichardsondesign.com

Schoolhouse Electric
schoolhouse.com

Shaun Ford & Co.
shaunfordandco.com

Sherwin-Williams
sherwin-williams.ca

Silk Plant Warehouse
silkplantwarehouse.net

Simons
simons.ca

Smash Salvage
smashsalvage.com

Station Earth
stationearth.com

Stephanie Charest Interior Design
stephaniecharest.com

Stone Tile
stone-tile.com

Stoney Creek Furniture
stoneycreekfurniture.com

Structube
structube.com

T

Taps Bath
tapsbath.com

Tech Lighting Industrial
techlighting.com

The Curious Department
thecuriousdepartment.com

The Door Store
thedorystore.ca

The Rubinet Faucet Company
rubinet.com

Tielemans Interiors Inc.
tielemansfineflooring.com

Tierra Sol Ceramic Tile
tierrasol.ca

Tiffany Leigh Design
tiffanyleighdesign.com

Tonic Living
tonicliving.ca

U

Umbra
ca.umbra.com

Unique Projects
uniqueprojects.ca

V

Veronneau
veronneau.com

Vesta Fine Hardware
vestafinehardware.com

Vintage Fine Objects
vintagefineobjects.com

W

Watermarks Kitchen & Bath Boutique
watermarksboutique.com

Wayfair
wayfair.ca

West Elm
westelm.ca

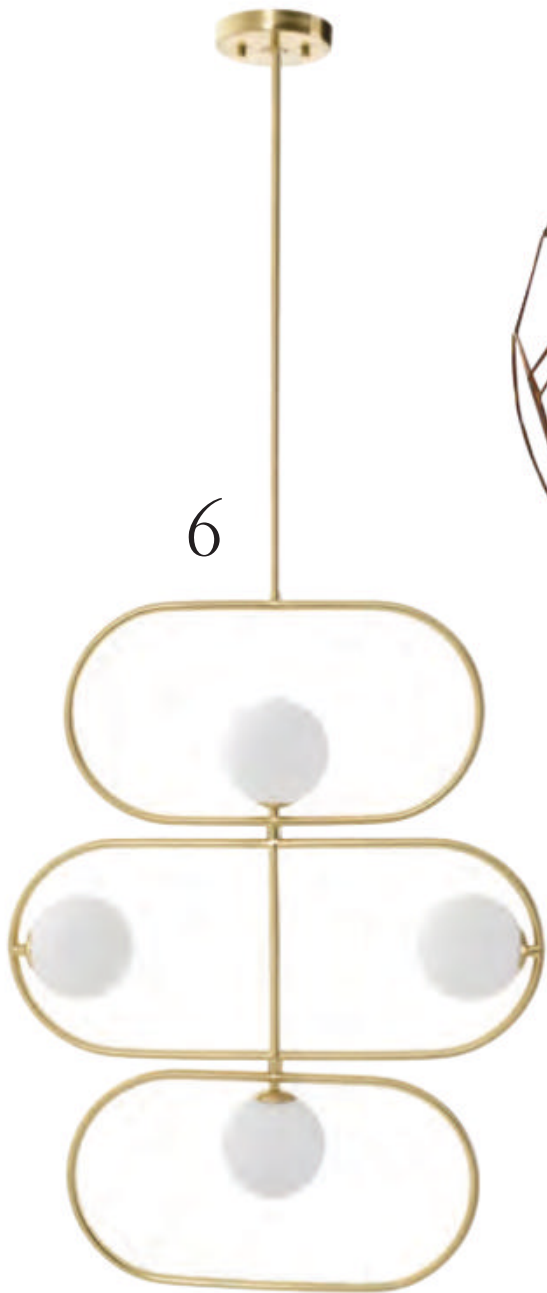
World Stone Ltd.
worldstoneltd.com

Worlds Away
worlds-away.com

Y

Y Lighting
y-lighting.com





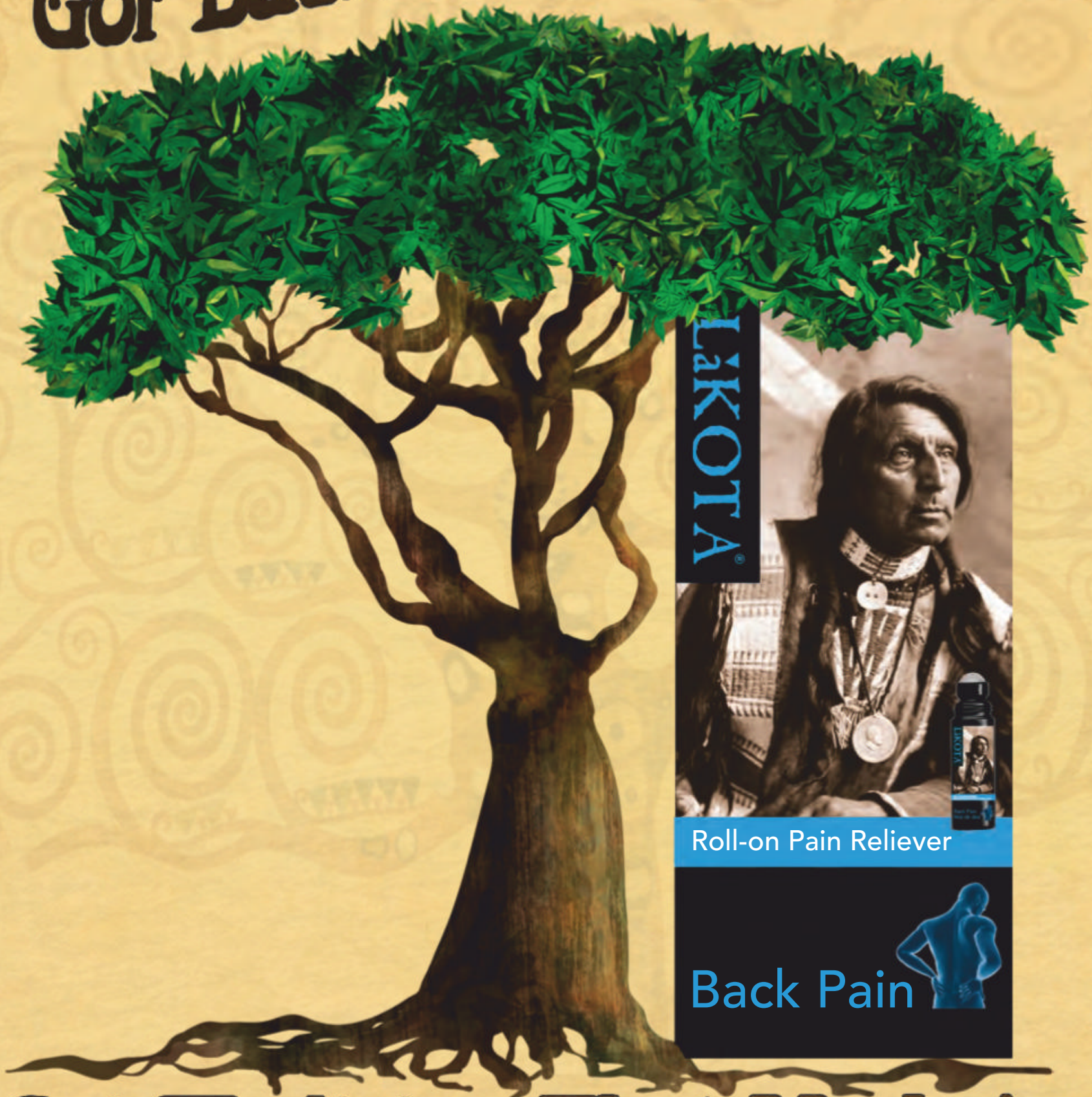
9 bright lights



Change your light, change your room:
these pendants and chandeliers won't leave you hanging.

1. Nordic, 8D", \$130, Must Société, mustsociete.com. 2. Sputnik, 30", \$180, Bouclair, bouclair.ca. 3. Jupiter, 27", \$279, Article, article.com. 4. Jane three-light semi-flush mount, 24", \$350, Wayfair, wayfair.ca. 5. Canvas Halle, 25D", \$140, Canadian Tire, canadiantire.ca. 6. Erunda, 24", \$379, Mobilia, mobilia.ca. 7. Marrakesh Copper, 20", \$420, Maison Corbeil, maisoncorbeil.com. 8. Nevada, 27", \$378, Renwil, renwil.com. 9. GB 06 NN-LA17, 50", \$710, Luminaire Authentik, luminaireauthentik.com.

Got Back Pain?



Roll-on Pain Reliever

Back Pain

Get Medicine That Works!

Warning

This is a powerful product. It uses a five-fold natural pepper extract that blocks pain at the source. Unlike other rub-on pain relievers that only cause skin warming, Lakota works below the skin at the site of the pain. When it is absorbed, it blocks the pain messengers from sending a pain signal, killing the pain. And Lakota lasts way longer. It comes in a no-mess, hands-free roll-on. Get

2021 COLOUR OF THE YEAR

DANCING IN THE RAIN
C20-5-0644-0

DANCING IN THE RAIN, the colour of hope and comfort in one exquisite hue. Beauti-Tone's colour of the year for 2021 brings tranquility and calm to any room and unites us all with a peaceful yet joyful state of mind.



Beauti-Tone
PAINT • PEINTURE

Available exclusively at Home Hardware and Building Centre locations.
Actual paint colour may not be as shown.

